

# QUICK INSTALLATION GUIDE

## IFC 200/202 Data Logger Interface

For Windows XP SP3 or later



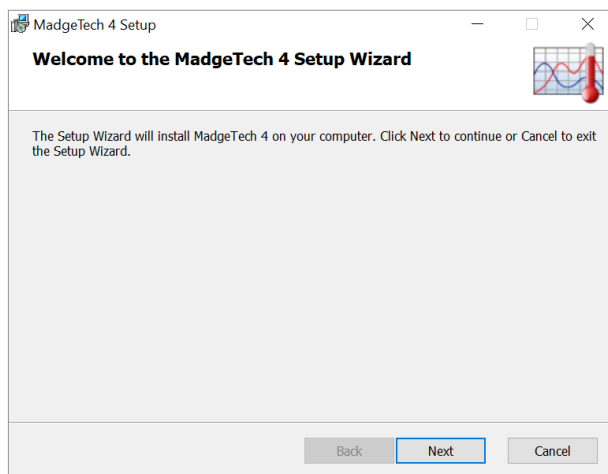
**IMPORTANT:** Do not connect the IFC to your PC until instructed to do so.

The IFC interface cable packages allow for the communication between stand alone data loggers and the MadgeTech 4 Software. Directly connect the IFC to a PC to start and stop the data logger or to download readings.

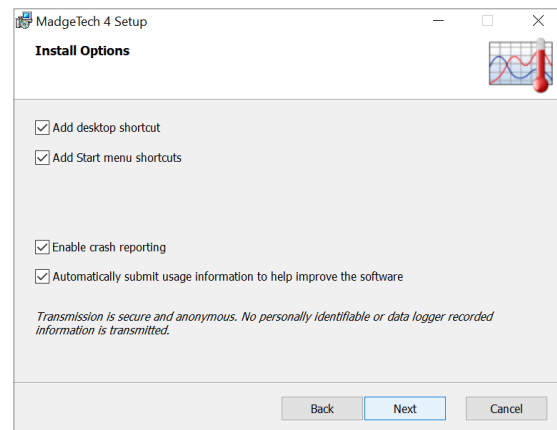
### Launch the MadgeTech 4 Installer

MadgeTech 4 Standard Software can be downloaded from the MadgeTech website ([madgetech.com/software](http://madgetech.com/software)). See the MadgeTech 4 Software Manual for complete installation instructions.

1. Open the **MT4 folder** from the newly downloaded file and double click the **MTInstaller.exe** file to launch the Setup Wizard.
2. Select the Installer Language and click **OK**.
3. Accept the End-User License Agreement and click **Next**.



4. Choose the installation options and click **Next**.



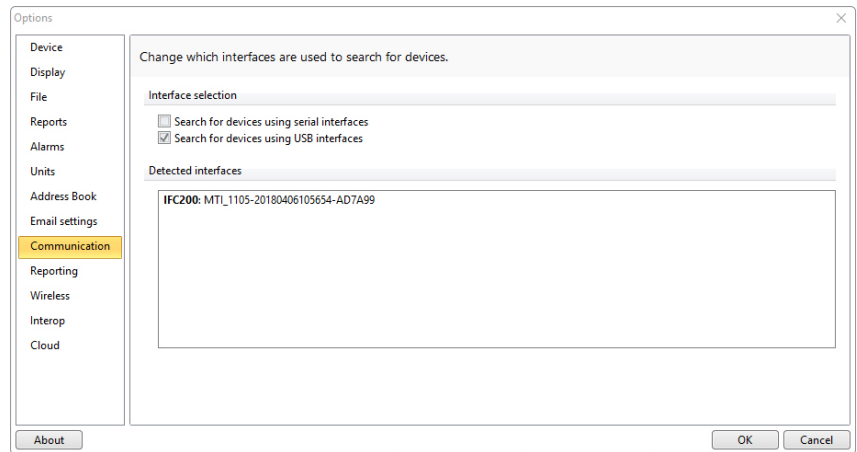
5. MadgeTech 4 is now ready to install. Click **Install** to begin the installation.
6. Click Finish when the installation is complete.

The MadgeTech 4 Software requires the .NET Framework 4.0 to be installed on the PC. The Windows 8 and Windows 10 operating system comes with a newer version of the .NET Framework already installed. If the .NET Framework 4.0 has not been installed on the PC, download it from the Microsoft.com website.

After the .NET Framework 4.0 installation has been confirmed, install the MadgeTech 4 Software following the steps above.

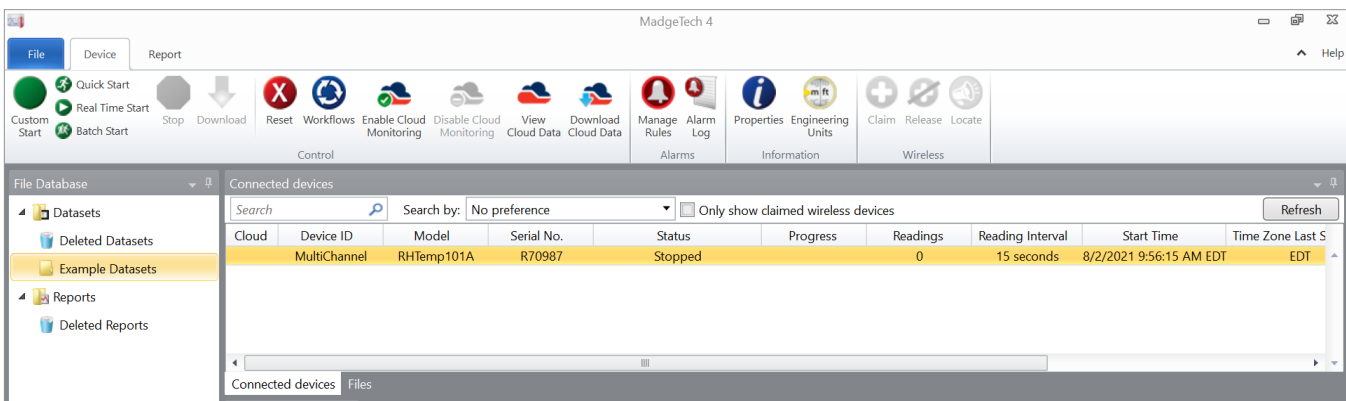
# Connecting the IFC to MadgeTech 4 Software

1. Connect the USB end of the IFC200/202 into a USB port on the PC.
2. Once the IFC200/202 is plugged in, a New Hardware Found message will appear on the PC. The new drivers will automatically configure for use with the Interface cable. A message will then appear that the new hardware is installed and ready to use.
3. Verify the IFC has been installed correctly by launching the MadgeTech 4 Software and navigating to **File > Options > Communication**. You should see the IFC you installed listed on this screen.



## Testing the Data Logger and Interface Connection

1. To verify that the Interface drivers are installed properly, start the MadgeTech 4 Software. (If necessary, see the software manual for additional instructions on the software.)
2. When the IFC200/202 is connected to the PC, the blue LED indicator should be lit, if the drivers are properly installed and the interface is detected by Windows. If the indicator light is not on, unplug the interface cable and verify that the USB drivers have been installed. Wait 5 seconds and plug it back into the PC.
3. Plug the IFC200/202 cable into the data logger.
4. Your device will appear in the Connected Devices panel.



## Additional Information

For additional information or troubleshooting assistance, visit us online at [madgetech.com](https://www.madgetech.com), contact us at [support@madgetech.com](mailto:support@madgetech.com) or call (603) 456-2011.