

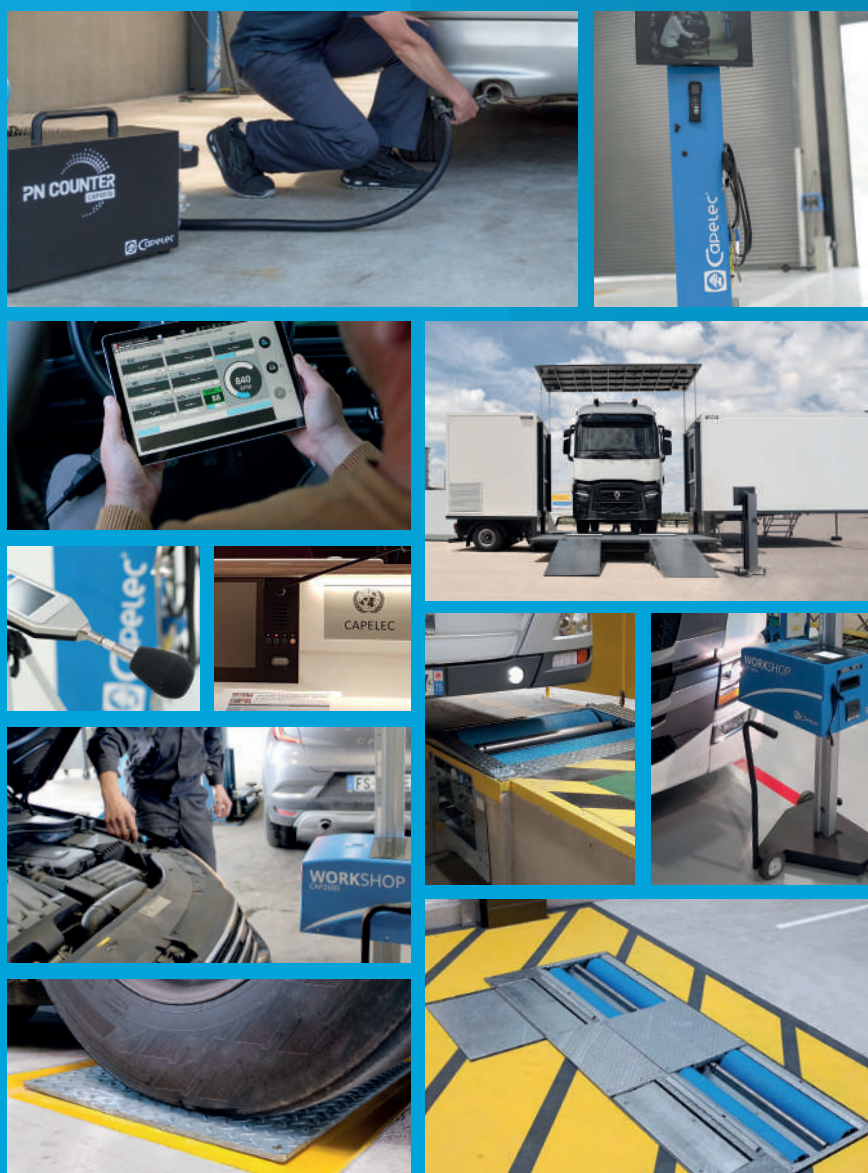
VEHICLE INSPECTION AND WORKSHOP EQUIPMENT

LIGHTING

EMISSIONS

GROUND

EXPERTISE  
RESEARCH  
DEVELOPMENT  
DESIGN  
MANUFACTURING



CONCEPTION & FABRICATION  
FRANÇAISES





## SUPPORTING TOMORROW'S MOBILITY

### Anticipating changes

For more than 30 years, Capelec has been offering mobility professionals innovative measurement and control equipment. Improving air quality and road safety are major challenges. The solutions developed aim to improve transport conditions, while respecting the environment.

### Centralized design and manufacturing

The Capelec design office imagines and develop equipment in South of France. This is also where the production site and the technical support are located. A centralization that ensures efficiency and reactivity.



### Innovation and Quality

#### **20% of the teams dedicated to research and development**

Capelec offers a range of equipment dedicated to emission control and vehicle safety : braking, suspension, slip control, exhaust emissions and lighting. Innovative and ergonomic equipment that meets the most demanding expectations of the sector's players.



Teams to service you



**+33 (0)4 67 156 156**  
[contact@capelec.com](mailto:contact@capelec.com)

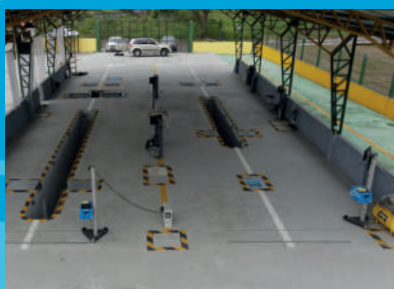


# INTERNATIONAL INVOLVEMENT

Capelec exports in more than 50 countries.

Our equipment are operated on all continents and latitudes.

The company is also an active member of main associations.



## CAPELEC SAS

1130 rue des Marels Parc Euréka  
34000 Montpellier FRANCE

☎ +33 (0)4 67 156 156

✉ [contact@capelec.com](mailto:contact@capelec.com)

## CAPELEC INDIA PVT. LTD.

Mez & 1st Floor, A-83,  
Okhla Industrial Area, Ph-II,  
New Delhi - 110020 INDIA

☎ +91-9654117338

✉ [capelec.india@capelec.com](mailto:capelec.india@capelec.com)

## CAPELEC DEUTSCHLAND GMBH

Gewerbestraße 8  
87787 Wolfertschwenden DEUTSCHLAND

☎ (+49) 08334/98 95 323

✉ [capelec.deutschland@capelec.de](mailto:capelec.deutschland@capelec.de)



## OUR GUARANTEES



### RELIABILITY AND PERFORMANCE

The equipment benefits from control and measurement expertise, and embeds the most innovative technologies.



### AN INTEGRATED RANGE

Complemented by accessories and options, the equipment can be sold separately or combined.



### WARRANTY

Secure your future equipment purchases with extended warranty service.



### TRAINING

We train technicians in the installation and maintenance of equipment. The offer is adapted to your needs.



### ASSISTANCE

The remote maintenance service support you through the remote control of your connected equipment.

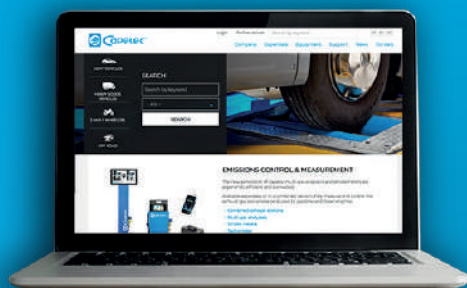


### CERTIFICATION

Audits carried out each year attest that products and services meet the requirements of the ISO 9001:2015 standard.



[www.capelec.com](http://www.capelec.com)



### ONLINE CATALOG

All references are available on Capelec website.



EMISSIONS



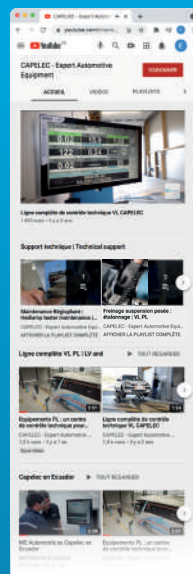
GROUND



LIGHTING



EOBD



### FOLLOW US !

Discover videos on our Youtube channel.

Achievements

Tutorials for use

Maintenance



## VEHICLE INSPECTION | WORKSHOPS



### INSPECTION LINES

7

LV | HGV FULL TEST LANE

8

LV | HGV MOBILE INSPECTION LANE

10



### EMISSIONS

13

MULTIFUNCTION COMBINED STATIONS

15

GAS ANALYSERS

18

SMOKEMETERS

20

PARTICLE COUNTERS

21

EMISSIONS EXPERTISE

22

EOBD SCANTOOLS

28

MEASURING AND COMMUNICATION

30



### LIGHTING

31

HEADLIGHT TESTERS

32

LIGHTING EXPERTISE

34



### GROUND

37

LV | LV+ TEST LANE

39

HGV | MIXED TEST LANE

42

2, 3 AND 4 WHEELS BRAKE TESTERS

44

PLAY DETECTORS

50

DECELEROMETER

51

### OTHER TESTERS

52

PINCH FORCE TESTER

52

TINT GLASS METER

52

TAXIMETER TEST BENCH

52

SONOMETER

53

# INSPECTION LINES

## PERIODICAL TECHNICAL INSPECTION



LV | HGV FULL TEST LANE

8



LV | HGV MOBILE INSPECTION LANE 10



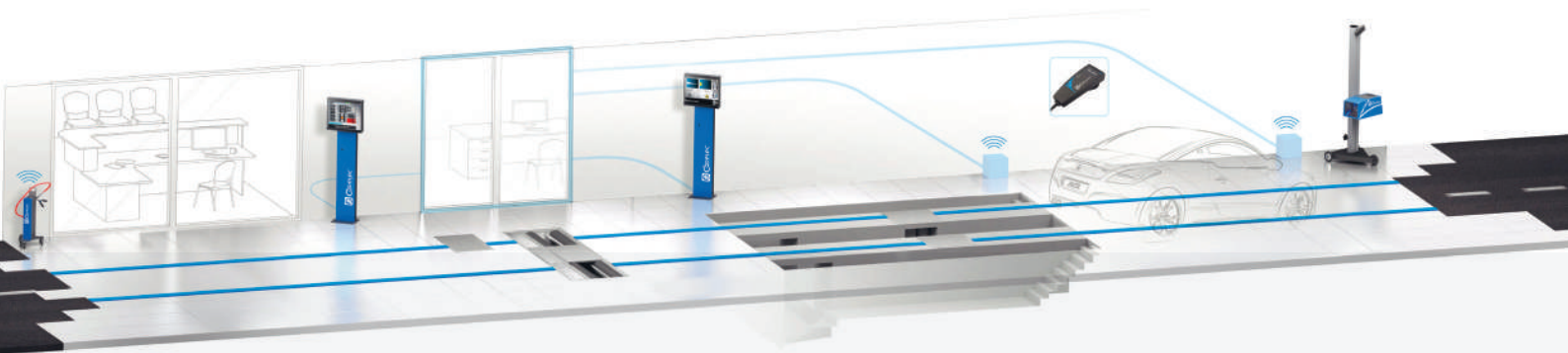
# LV | HGV FULL TEST LANE

## EFFICIENT ROADWORTHINESS

The CAP20000 test lane includes all equipment required to carry out mandatory inspections, data centralization and easy commissioning.

### FULL TEST LANE FOR ALL VEHICLE TYPES





L CAT.



LV CAT.



HGV CAT.

**Emission Testing Equipment**

Gas analyser	✓	✓	
Smokemeter	✓	✓	✓
Particle counter	✓	✓	✓
EOBD scantool	✓	✓	✓
Tachometer	✓	✓	✓

**Headlight Testing Equipment**

Headlight tester	✓	✓	✓
------------------	---	---	---

**Brake Testing Equipment**

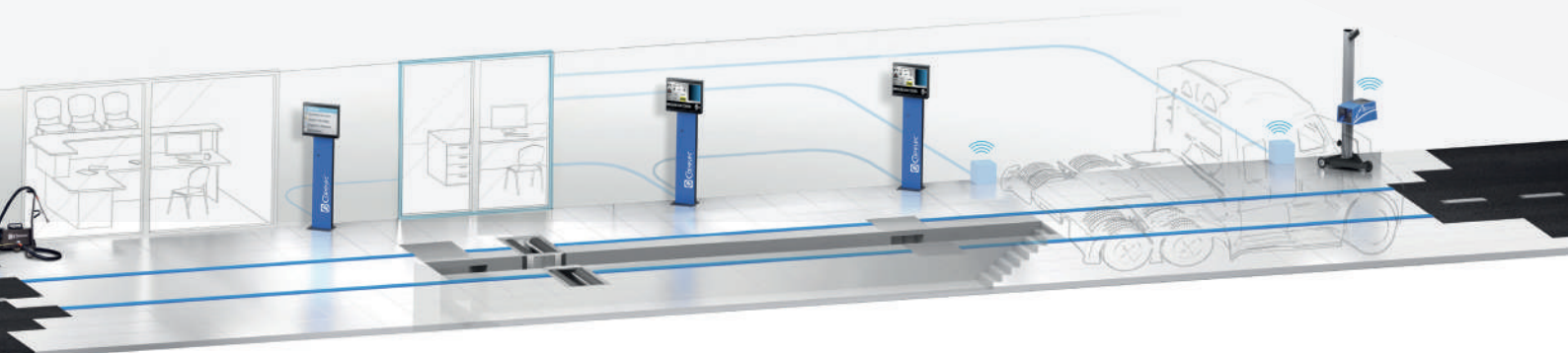
Brake tester	✓	✓	✓
Suspension tester		✓	✓*
Side slip tester		✓	
Play detectors		✓	✓
Decelerometer	✓	✓	✓

**Other testers**

Taximeter tester		✓	
Sonometer	✓	✓	✓

CAP20000 full testing line

\* Mixed test lane





## LV | HGV MOBILE INSPECTION LANE

### TRANSPORTABLE INSPECTION LINE

Complete, fast to operate and commission.

The CAP CHRONO 10510 mobile test unit performs the main inspections, and guarantee the safety and availability of vehicle fleet.







LV AND HGV MOBILE TEST LANE

Platform

- Weight 6000 kg | 10' rollout
- 12 m semitrailer (king pin) | 3 axels
- 4 hydraulic supports
- Power generator 25 kVA
- Inspection area : 4 x 8 x 5 m

Equipment

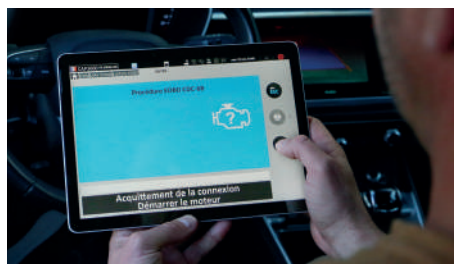
- Roller brake tester
- Suspension tester
- Side slip tester
- Play detector (optional)
- Petrol & diesel emission testers
- Headlight tester
- PTI / MOT software management (optional)

Container

- ISO 40' container
- 5 m² office
- Complete office desk
- PC and printer
- Air conditioning A/C

CAP CHRONO 10510





# EMISSIONS

## INSPECTION & WORKSHOP EQUIPMENT



MULTIFUNCTION COMBINED STATIONS 15



GAS ANALYSERS

18



SMOKEMETERS

20



PARTICLE COUNTERS

21



EMISSIONS EXPERTISE

22



EOBD SCANTOOLS

28

MEASURING AND COMMUNICATION

30





## MODULAR SOLUTIONS

- 4 or 5 Gases Analyzer
  - Smokemeter
- Particle Analyzer
  - OBD Scantool
- Revolution Counter

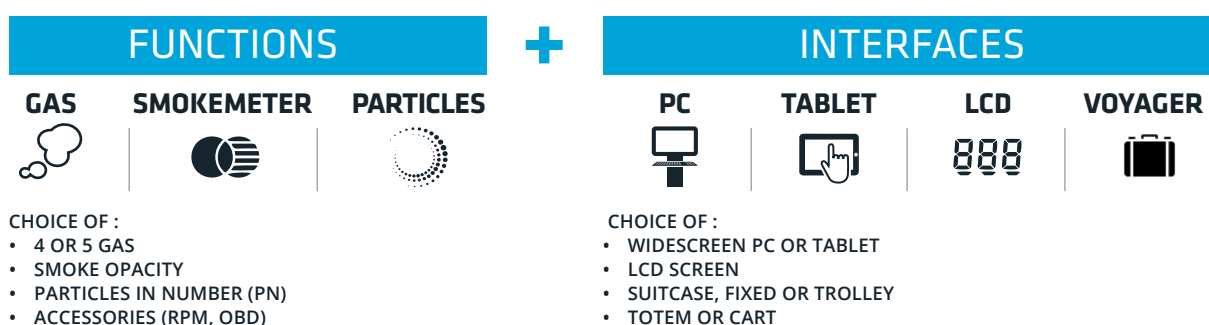
## GAS | SMOKEMETER | PARTICLES

**A complete range of equipment stand alone or combined.**

**FLEXIBILITY :** carry out all emissions tests for your business: vehicles inspection, repair workshop, fleet management.

**SCALABILITY :** adapt your equipment to technical and regulatory developments, and upgrade to new functions adding accessories or options.

## SETUP THE EQUIPMENT



1 Gas + Particle analyzer + touch-screen PC on Totem (optional mobile holder)

2 Stand-alone LCD gas analyzer (optional mobile holder)

3 Gas analyzer + Smokemeter + Tablet on mobile holder

4 Smokemeter

5 Portable gas analyzer



2



3



4



5

# MULTIFUNCTION COMBINED STATIONS

## GAS | SMOKEMETER | PARTICLES

Equipment combining main functions, available with different interfaces, and a wide choice of options and accessories.



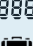

### 3-FUNCTION



#### Modules :

- ✓ Gas analyser
- ✓ Smokemeter
- ✓ Particle analyser

#### Interface choice :

-  22" touch screen on Totem, remote control
-  10" tablet
-  LCD screen
-  Laptop suitcase

### 3-FUNCTION UNIT

#### 4 GASES | SMOKEMETER | PARTICLES

Wireless communication

Software 3 Functions

Accessory storage

- ✓ CAP3010 gas analyser
- ✓ CAP3030 BT smokemeter
- ✓ CAP3070 particle analyser
- ✓ CAP8535 RPM module
- ✓ CAP4350 EOBD module
- ✓ Sampling probes
- ✓ Oil temperature sensor

3-FUNCTION UNIT

#### GAS ANALYSER TECHNICAL SPECIFICATIONS

Complying with standards : OIML R99, Class 0, ISO 3930, BAR 97, MID

HC :	0-10 000 ppm (C <sub>6</sub> H <sub>14</sub> ) Hexane
	0-20 000 ppm (C <sub>3</sub> H <sub>8</sub> ) Propane
CO :	Range 0 - 15 %
CO <sub>2</sub> :	Range 0 - 20%
O <sub>2</sub> :	Range 0 - 25 %
Lambda :	Range 0 - 9,99

#### SMOKEMETER TECHNICAL SPECIFICATIONS

Complying with standards : ISO 11614, NFR 10-025

- Opacity range : 0,00 to 9,99 m<sup>-1</sup>
- Opacity resolution : 0,01 m<sup>-1</sup>

#### PN TECHNICAL SPECIFICATIONS

Approvals: NMI, METAS, PTB

Measuring range : 5 000 to 5 000 000 particles/cm<sup>3</sup>

Resolution of indication : 1000 particles/cm<sup>3</sup>

Extended Diffusion Charging Technology

- ✓ DUAL MODES : INSPECTION & WORKSHOPS

### 2-FUNCTION



### CAP3201 STANDALONE

#### 4 GASES | SMOKEMETER

RS232 communication

LCD display | 5 key keyboard | Built-in printer

S3201 software

- ✓ CAP3210 gas analyser
- ✓ CAP3030 smokemeter
- ✓ RPM inductive and piezo sensor
- ✓ Sampling probes
- ✓ Oil temperature sensor

CAP3201EX-GO4

#### GAS ANALYSER TECHNICAL SPECIFICATIONS

Complying with standards : OIML R99, Class 0, ISO 3930, BAR 97, MID

HC :	0-10 000 ppm (C <sub>6</sub> H <sub>14</sub> ) Hexane
	0-20 000 ppm (C <sub>3</sub> H <sub>8</sub> ) Propane
CO :	Range 0 - 15 %
CO <sub>2</sub> :	Range 0 - 20%
O <sub>2</sub> :	Range 0 - 25 %
Lambda :	Range 0 - 9,99

#### SMOKEMETER TECHNICAL SPECIFICATIONS

Complying with standards : ISO 11614, NFR 10-025

- Opacity range : 0,00 to 9,99 m<sup>-1</sup>
- Opacity resolution : 0,01 m<sup>-1</sup>

- ✓ DUAL MODES : INSPECTION & WORKSHOPS





## CAP3550 VOYAGER

### 4 GASES | SMOKEMETER

Wireless communication  
S3550 software  
Carrying cases

- ✓ Suitcase 1 : CAP3010 gas analyser
- ✓ Suitcase 2 : Laptop & accessories
- ✓ CAP3030 BT smokemeter
- ✓ Sampling probes
- ✓ Oil temperature sensor

CAP3550EX4-GO

### GAS ANALYSER TECHNICAL SPECIFICATIONS

Complying with standards : OIML R99, Class 0, ISO 3930, BAR 97, MID

HC : 0-10 000 ppm (C<sub>6</sub>H<sub>14</sub>) Hexane  
0-20 000 ppm (C<sub>3</sub>H<sub>8</sub>) Propane  
CO : Range 0 - 15 %  
CO<sub>2</sub> : Range 0 - 20%  
O<sub>2</sub> : Range 0 - 25 %  
Lambda : Range 0 - 9,99

### SMOKEMETER TECHNICAL SPECIFICATIONS

Complying with standards : ISO 11614, NFR 10-025

- Opacity range : 0,00 to 9,99 m<sup>-1</sup>
- Opacity resolution : 0,01 m<sup>-1</sup>

✓ DUAL MODES : INSPECTION & WORKSHOPS



## CAP3500 TABLET

### 4 GASES | SMOKEMETER

Wireless communication  
S3500 software  
Accessory storage

- ✓ CAP3010 gas analyser
- ✓ CAP3030 BT smokemeter
- ✓ 10" tablet and mobile holder
- ✓ Sampling probes
- ✓ Oil temperature sensor

CAP3500EX-GO8

### GAS ANALYSER TECHNICAL SPECIFICATIONS

Complying with standards : OIML R99, Class 0, ISO 3930, BAR 97, MID

HC : 0-10 000 ppm (C<sub>6</sub>H<sub>14</sub>) Hexane  
0-20 000 ppm (C<sub>3</sub>H<sub>8</sub>) Propane  
CO : Range 0 - 15 %  
CO<sub>2</sub> : Range 0 - 20%  
O<sub>2</sub> : Range 0 - 25 %  
Lambda : Range 0 - 9,99

### SMOKEMETER TECHNICAL SPECIFICATIONS

Complying with standards : ISO 11614, NFR 10-025

- Opacity range : 0,00 to 9,99 m<sup>-1</sup>
- Opacity resolution : 0,01 m<sup>-1</sup>

✓ DUAL MODES : INSPECTION & WORKSHOPS



## CAP3600 TOTEM

### 4 GASES | SMOKEMETER

Wireless communication  
S3600 software  
Accessory storage

- ✓ CAP3010 gas analyser
- ✓ CAP3030 BT smokemeter
- ✓ 22" touch screen on Totem pole
- ✓ Remote control
- ✓ Sampling probes
- ✓ Oil temperature sensor

CAP3600EX-GOM

### GAS ANALYSER TECHNICAL SPECIFICATIONS

Complying with standards : OIML R99, Class 0, ISO 3930, BAR 97, MID

HC : 0-10 000 ppm (C<sub>6</sub>H<sub>14</sub>) Hexane  
0-20 000 ppm (C<sub>3</sub>H<sub>8</sub>) Propane  
CO : Range 0 - 15 %  
CO<sub>2</sub> : Range 0 - 20%  
O<sub>2</sub> : Range 0 - 25 %  
Lambda : Range 0 - 9,99

### SMOKEMETER TECHNICAL SPECIFICATIONS

Complying with standards : ISO 11614, NFR 10-025

- Opacity range : 0,00 to 9,99 m<sup>-1</sup>
- Opacity resolution : 0,01 m<sup>-1</sup>

✓ DUAL MODES : INSPECTION & WORKSHOPS

# GAS ANALYSERS

## GASOLINE ENGINES

Measurement of level of the 4 gases concentration emitted by combustion engines : HC, O<sub>2</sub>, CO et CO<sub>2</sub>.  
Interface and functions differ according to model.



### CAP3201 STANDALONE

#### 4 GASES

RS232 communication

LCD display | 5 key keyboard | Built-in printer

S3201 software

- ✓ CAP3210 gas analyser
- ✓ RPM inductive and piezo sensor
- ✓ Sampling probe
- ✓ Oil temperature sensor

CAP3201EX-G

#### GAS ANALYSER TECHNICAL SPECIFICATIONS

Complying with standards : OIML R99, Class 0, ISO 3930, BAR 97, MID

HC : 0-10 000 ppm (C<sub>6</sub>H<sub>14</sub>) Hexane  
0-20 000 ppm (C<sub>3</sub>H<sub>8</sub>) Propane  
CO : Range 0 - 15 %  
CO<sub>2</sub> : Range 0 - 20 %  
O<sub>2</sub> : Range 0 - 25 %  
Lambda : Range 0 - 9,99

✓ DUAL MODES : INSPECTION & WORKSHOPS



### CAP3500 TABLET

#### 4 GASES

Wireless communication

S3500 software

Accessory storage

- ✓ CAP3010 gas analyser
- ✓ 10" tablet and mobile holder
- ✓ Sampling probe
- ✓ Oil temperature sensor

CAP3500EX-G8

#### GAS ANALYSER TECHNICAL SPECIFICATIONS

Complying with standards : OIML R99, Class 0, ISO 3930, BAR 97, MID

HC : 0-10 000 ppm (C<sub>6</sub>H<sub>14</sub>) Hexane  
0-20 000 ppm (C<sub>3</sub>H<sub>8</sub>) Propane  
CO : Range 0 - 15 %  
CO<sub>2</sub> : Range 0 - 20 %  
O<sub>2</sub> : Range 0 - 25 %  
Lambda : Range 0 - 9,99

✓ DUAL MODES : INSPECTION & WORKSHOPS



## CAP3550 VOYAGER

### 4 GASES

Wireless communication

S3550 software

Carrying cases

- ✓ Suitcase 1 : CAP3010 gas analyser
- ✓ Suitcase 2 : Laptop & accessories
- ✓ Sampling probe
- ✓ Oil temperature sensor

CAP3550EX-G

### GAS ANALYSER TECHNICAL SPECIFICATIONS

Complying with standards : OIML R99, Class 0, ISO 3930, BAR 97, MID

HC : 0-10 000 ppm ( $C_6H_{14}$ ) Hexane  
0-20 000 ppm ( $C_3H_8$ ) Propane

CO : Range 0 - 15 %

CO<sub>2</sub> : Range 0 - 20%

O<sub>2</sub> : Range 0 - 25 %

Lambda : Range 0 - 9,99

✓ DUAL MODES : INSPECTION & WORKSHOPS



## CAP3600 TOTEM

### 4 GASES

Wireless communication

S3600 software

Accessory storage

- ✓ CAP3010 gas analyser
- ✓ 22" touch screen on Totem pole
- ✓ Remote control
- ✓ Sampling probe
- ✓ Oil temperature sensor

CAP3600EX-GM

### GAS ANALYSER TECHNICAL SPECIFICATIONS

Complying with standards : OIML R99, Class 0, ISO 3930, BAR 97, MID

HC : 0-10 000 ppm ( $C_6H_{14}$ ) Hexane  
0-20 000 ppm ( $C_3H_8$ ) Propane

CO : Range 0 - 15 %

CO<sub>2</sub> : Range 0 - 20%

O<sub>2</sub> : Range 0 - 25 %

Lambda : Range 0 - 9,99

✓ DUAL MODES : INSPECTION & WORKSHOPS



# SMOKEMETERS

## DIESEL ENGINES

Measure exhaust fumes from internal combustion engines. Available with or without interface. Features differ according to model.



### CAP3201 STANDALONE

#### SMOKEMETER

RS232 communication

LCD display | 5 key keyboard | Built-in printer

S3201 software

- ✓ CAP3030 smoke meter
- ✓ Piezo sensor
- ✓ Sampling probe
- ✓ Oil temperature sensor

CAP3200EX-O

#### SMOKEMETER TECHNICAL SPECIFICATIONS

Complying with standards : ISO 11614, NFR 10-025

- Opacity range : 0,00 to 9,99 m<sup>-1</sup>
- Opacity resolution : 0,01 m<sup>-1</sup>

✓ DUAL MODES : INSPECTION & WORKSHOPS



### CAP3550 VOYAGER

#### SMOKEMETER

Wireless communication

S3550 software

Carrying case

- ✓ Suitcase : 10" tablet and accessories
- ✓ CAP3030 BT smoke meter
- ✓ Sampling probe
- ✓ Oil temperature sensor

CAP3500EX-O8

#### SMOKEMETER TECHNICAL SPECIFICATIONS

Complying with standards : ISO 11614, NFR 10-025

- Opacity range : 0,00 to 9,99 m<sup>-1</sup>
- Opacity resolution : 0,01 m<sup>-1</sup>

✓ DUAL MODES : INSPECTION & WORKSHOPS



### CAP3600 TOTEM

#### SMOKEMETER

Wireless communication

S3600 software

Accessory storage

- ✓ CAP3030 BT smoke meter
- ✓ 22" touch screen on Totem pole
- ✓ Remote control
- ✓ Sampling probe
- ✓ Oil temperature sensor

CAP3600EX-OM

#### SMOKEMETER TECHNICAL SPECIFICATIONS

Complying with standards : ISO 11614, NFR 10-025

- Opacity range : 0,00 to 9,99 m<sup>-1</sup>
- Opacity resolution : 0,01 m<sup>-1</sup>

✓ DUAL MODES : INSPECTION & WORKSHOPS

# PARTICLE COUNTERS

## DIESEL ENGINES

The fine-particle count indicates whether the vehicle's particulate filter is working properly.



### CAP3500 TABLET

#### PARTICLES

Wireless communication

S3070 software

Carrying case

- ✓ CAP3070 particle counter with trolley
- ✓ Suitcase : 10" tablet and accessories
- ✓ Heated sampling probe
- ✓ Oil temperature sensor

CAP3500EX-P

#### PN TECHNICAL SPECIFICATIONS

Approvals: NMI, METAS, PTB  
Measuring range : 5 000 to 5 000 000 particles/cm<sup>3</sup>  
Resolution of indication : 1000 particles/cm<sup>3</sup>  
Extended Diffusion Charging Technology

✓ DUAL MODES : INSPECTION & WORKSHOPS



### CAP3600 TOTEM

#### PARTICLES

Wireless communication

S3070 software

Accessory storage

- ✓ CAP3070 particle counter
- ✓ 22" touch screen on Totem pole
- ✓ Remote control
- ✓ Heated sampling probe
- ✓ Oil temperature sensor

CAP3600EX-P

#### PN TECHNICAL SPECIFICATIONS

Approvals: NMI, METAS, PTB  
Measuring range : 5 000 to 5 000 000 particles/cm<sup>3</sup>  
Resolution of indication : 1000 particles/cm<sup>3</sup>  
Extended Diffusion Charging Technology

✓ DUAL MODES : INSPECTION & WORKSHOPS

## AFTERMARKET EMISSION EXPERTISE



## 4 GASES | NO<sub>x</sub> | SMOKEMETER

### Aftermarket exhaust emissions compliance.

The WORKSHOP® range combines expertise in PTI / MOT equipment optimised to the garage market.

It enables a complete diagnosis to be made before repair, and a detailed report to be produced after servicing.

### WORKSHOP® FEATURES

#### COMPLIANCE



#### DIAGNOSTIC



#### REPORTS



- Pre-technical inspection
- Complete engine combustion diagnostics
- Pre-post repair tests
- Technical and customer detailed reports



1

- 1 CAP3600 Workshop® Totem
- 2 CAP3500 Workshop® Tablet
- 3 PTI/MOT procédure
- 4 Live value curves
- 5 Before / After report



2



3

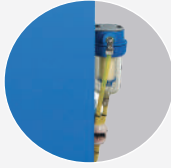


4



5





## CAP3600 WORKSHOP® TOTEM

### 5 GASES | SMOKEMETER

Wireless communication

S3600 WS software

Accessory storage

- ✓ CAP3010 gas analyser
- ✓ CAP3030 BT smokemeter
- ✓ CAP8535 RPM module
- ✓ CAP4350 EOBD module
- ✓ 22" touch screen on mobile Totem pole
- ✓ Remote control
- ✓ Sampling probes
- ✓ Oil temperature sensor

CAP3600FRWS-GOM

### GAS ANALYSER TECHNICAL SPECIFICATIONS

Complying with standards : OIML R99, Class 0, ISO 3930, BAR 97, MID

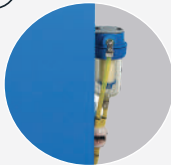
HC :	0-10 000 ppm (C <sub>6</sub> H <sub>14</sub> ) Hexane
	0-20 000 ppm (C <sub>3</sub> H <sub>8</sub> ) Propane
CO :	Range 0 - 15 %
CO <sub>2</sub> :	Range 0 - 20%
O <sub>2</sub> :	Range 0 - 25 %
Lambda :	Range 0 - 9,99
NOx :	0 - 5 000 ppm

### SMOKEMETER TECHNICAL SPECIFICATIONS

Complying with standards : ISO 11614, NFR 10-025

- Opacity range : 0,00 to 9,99 m<sup>-1</sup>
- Opacity resolution : 0,01 m<sup>-1</sup>

✓ DUAL MODES : INSPECTION & WORKSHOPS



## CAP3500 WORKSHOP® TABLET

### 5 GASES | SMOKEMETER

Wireless communication

S3500 WS software

Accessory storage

- ✓ CAP3010 gas analyser
- ✓ CAP3030 BT smokemeter
- ✓ CAP8520 RPM module
- ✓ CAP4350 EOBD module
- ✓ 10" tablet and mobile holder
- ✓ Sampling probes
- ✓ Oil temperature sensor

CAP3500EX-5GO4

### GAS ANALYSER TECHNICAL SPECIFICATIONS

Complying with standards : OIML R99, Class 0, ISO 3930, BAR 97, MID

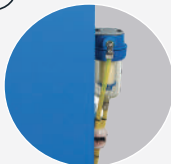
HC :	0-10 000 ppm (C <sub>6</sub> H <sub>14</sub> ) Hexane
	0-20 000 ppm (C <sub>3</sub> H <sub>8</sub> ) Propane
CO :	Range 0 - 15 %
CO <sub>2</sub> :	Range 0 - 20%
O <sub>2</sub> :	Range 0 - 25 %
Lambda :	Range 0 - 9,99
NOx :	0 - 5 000 ppm

### SMOKEMETER TECHNICAL SPECIFICATIONS

Complying with standards : ISO 11614, NFR 10-025

- Opacity range : 0,00 to 9,99 m<sup>-1</sup>
- Opacity resolution : 0,01 m<sup>-1</sup>

✓ DUAL MODES : INSPECTION & WORKSHOPS



## CAP3500 WORKSHOP® TABLET

### 5 GASES

Eco Entretien approved

Wireless communication

S3600 WS software

Accessory storage

- ✓ CAP3010 gas analyser
- ✓ CAP4350 EOBD module
- ✓ 10" tablet and mobile holder
- ✓ Sampling probe
- ✓ Oil temperature sensor

CAP3500EE-5G

### GAS ANALYSER TECHNICAL SPECIFICATIONS

Complying with standards : OIML R99, Class 0, ISO 3930, BAR 97, MID

HC :	0-10 000 ppm (C <sub>6</sub> H <sub>14</sub> ) Hexane
	0-20 000 ppm (C <sub>3</sub> H <sub>8</sub> ) Propane
CO :	Range 0 - 15 %
CO <sub>2</sub> :	Range 0 - 20%
O <sub>2</sub> :	Range 0 - 25 %
Lambda :	Range 0 - 9,99
NOx :	0 - 5 000 ppm

✓ DUAL MODES : INSPECTION & WORKSHOPS

## COMMON OPTIONS

### MEASUREMENT



**PN particle counter module**  
Set to change into a combi unit  
Extended Diffusion Charging technology

CAP3070-KIT



**Motorbike gaz analyser set**  
Feet and ajustable support  
Universal exhaust pipe adaptor  
Exhaust pipe extension | Filtration

CAP3200-KITMOTO



**HGV opacity smokemeter probe and hose**  
Heated probe | 2,50m long  
Hose | 3,16m long

SSE01099



**Mobile trolley for HGV smokemeter**  
4-wheel mobile base, brake  
CAP3030 opacity cell slot | Heated long probe  
230V power supply reel

CAP3030XX-SPL



**HGV smokemeter extension pipe**  
Rod, pipe and handle  
2m long  
Storage handle

CAP3030-CPPL

CAP3030-CPPLC (heated)



**Smokemeter hose**

1.5m PRO01028

2m PRO01030

3m PRO03602

3.5m PRO03817



**Exhaust probe extender**

PRE00123

### RPM & OIL TEMPERATURE



**Infrared temperature probe**  
Laser pointer | LCD screen  
Bluetooth wireless connection | Powered 12V  
Requires CAP1220

CAP1330



**Tachometer & thermometer | Battery**  
Battery cable & cigar-lighter cables  
Temperature probe | Bluetooth communication  
Requires CAP1220

CAP8520



**Thermometer & tachometer | Battery and Vibration**  
Temperature probe | Battery and cigar-lighter cables  
Wireless Bluetooth connection  
LCD screen | Vibration sensor | Requires CAP1220

CAP8535

### EOBD, MOBILITY, COMMUNICATION



**Connected EOBD reader**  
Bluetooth | Wireless connection | Universal scan-tool  
Range of vehicles : light vehicles, HGV  
Cables and EOBD plug

CAP4350



**Cell trolley**  
3 wheels | Brake | Handle  
Compatible with opacity cell series CAP3030  
& CAP3070

PRO03496



**RPM connection | PC**  
Cable between PC and CAP8535

SSE00810-PC



**Probe holder**  
To be positioned close to the exhaust pipe

PRO03030

# CAP3201 OPTIONS

## MEASUREMENT



**NOx measurement set**  
Adaptable to CAP3201 series

CAP3201-NOX



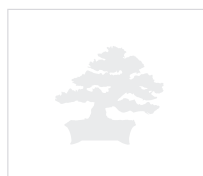
**Smokemeter module CAP3030 v2**  
Set to upgrade a gas analyser into a combi unit  
Complete cell probe, wires, connections

CAP3200-KITOPA-2



**Tachometer on battery**  
CPU board  
CAP3201 set  
Battery cable & cigar-lighter cables

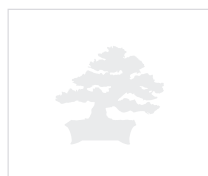
CAP3200-RPMBAT



**RPM connection | CAP3201 TTL**  
Cable between CAP3201 and CAP8535

SSE00870

## COMMUNICATION



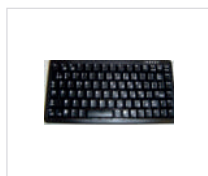
**Smokemeter connection**  
1m cable | Compatible with CAP3201 series | CAP85XX

SSE00057



**WIN 3200 software | Windows OS**  
Operating with CAP32XX series  
USB key | Connection cable

CAP3200-WIN3200



**Keyboard**  
Wired | PS2 connector

AZERTY keyboard

PRO00518

QWERTY keyboard

PRO00968



**Data encoder**  
Communication ports : USB, RJ45, RS232  
Linux OS

RS232 connection

CAP1830F-R

Wireless Bluetooth connection

CAP1830F-B

## MOBILITY



**Workshop trolley | Wheel base | Steel frame**  
Compatible with CAP32XX series  
Colours : grey, blue | CAPELEC branded

PRO03106



**Power converter | Cigar lighter**  
12VDC/230V AC

PRO01807



**RS232 converter to Bluetooth**

CAP3201 control port antenna

CAP1220

CAP32XX PC communication antenna

CAP1223

CAP3030 smoke cell antenna

CAP1221



# CAP3500/CAP3600 OPTIONS

## MEASUREMENT



**Smokemeter module CAP3030 v2 | Horizontal**  
Upgrading a gas analyser into a combined unit  
Probe | Holder | Wireless connection  
Bluetooth | S3030 software | Power supply cable

CAP3600M-OPA4



**4 gas analyser module | Wires & connectors**  
Upgrading a smoke meter into a combined unit  
Temperature probe | Filters  
S3600 Software | MID approval

CAP3600M-GAZEU



**NOx measurement set**

CAP3600M-NOX

## ERGONOMY



**Additional screen**  
With totem bracket

22" additional screen

CAP00941

22" additional touchscreen

CAP00945

27" additional touchscreen

CAP00947



**IR remote control**  
USB | infrared receiver  
Compatible with CAP9XXX & CAP3XXX series

CAP1000-RCIR-USB

# CAP3600 OPTIONS

## MOBILITY



**Mobile base | Metal | Grey**  
4 steering wheels | Protective bumper | Brake  
Compatible with CAPELEC totem

PRO03017

## ERGONOMY



**Keyboard holder | Adjustable**  
Adaptable to Capelec totem

PRO03029



**Wireless keyboard**  
For PC | Bluetooth  
QWERTY type

PRO03425

## STORAGE



**Screen protective cover**  
Polyester fabrics | Black

PRO02686

# CAP3070 OPTIONS



**Heated long probe PNC**  
Heated probe  
Insulation | Socket | Handle

Length 2.50 m	SSE01316
Length 4 m	SSE01317

# EOBD SCANTOOLS




## ON BOARD DIAGNOSTIC

Systems for accessing on-board computer information: reading DTC codes and ECU data.

### EOBD / OBFCM COMPLIANT



**Connection :**

-  22" touch screen on Totem, remote control
-  LCD screen
-  Laptop suitcase

### EOBD READER CONNECTED

**ALL VEHICLE TYPES**

- All brands and vehicles
- OBFCM compliant
- Bluetooth transmission
- Cable-free or extension cable
- Interchangeable with CAP4220 and CAP4250

- ✓ CAP4350 EOBD module
- ✓ Cable
- ✓ Windows

CAP4350



### EOBD READER STANDALONE

**ALL VEHICLE TYPES**

- All brands and vehicles
- Bluetooth transmission
- Keyboard | LCD screen

- ✓ CAP4120 or CAP4150 EOBD module with cable
- ✓ Protective case

LV	CAP4120-EN
LV+	CAP4150-EX



## EOBD OPTIONS

### COMMUNICATION



**Extension cable**  
EOBD extension cord

PRO04004



**Data encoder**  
Communication ports : USB, RJ45, RS232  
Linux OS

RS232 connection

CAP1830F-R

Wireless Bluetooth connection

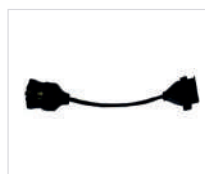
CAP1830F-B

### ACCESSORIES



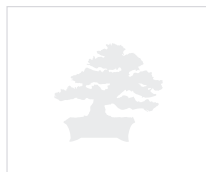
**Black holder | Screen protection**  
Compatible with CAP4120 series and CAP4150

PRO01055



**Truck adaptor plug**  
OBD round connector  
Heavy trucks

PRO01597



**Shoulder strap**  
Protective cover | Black polyester  
For CAP4120 & CAP4150 series

PRO02386

### PRINTERS



**Thermal printer | Wireless BT**  
Battery and charger

RS232 connection

CAP1000-IMPRS

Wireless Bluetooth connection

CAP1000-IMPBT

# MEASURING AND COMMUNICATION DEVICES



## TACHOMETER THERMOMETER

REVOLUTION COUNTER
Oil temperature
Dual mode : battery and vibration
Bluetooth transmission
Keyboard   LCD screen
S8535 software

✓ CAP8535 revolution counter module

CAP8535



## DATA ENCODER

Communication ports : USB, RJ45, RS232
S1830 software
Linux OS

✓ CAP1830 module

RS232	CAP1830F-R
Bluetooth	CAP1830F-B

# LIGHTING

## INSPECTION & WORKSHOP EQUIPMENT



HEADLIGHT TESTERS

32



LIGHTING EXPERTISE

34

# HEADLIGHT TESTERS

## ALL HEADLAMP TYPES

Capelec headlamp testers provide fast and precise testing. The range adapts to all environment : connected, automated or mechanical, wheeled or rail-mounted.



✓ Wheel base  
Also available with rail base.

### CAP2100 MECHANICAL

#### HEADLAMPS: HALOGEN, XENON, LED

Laser alignment  
1.8 m aluminum column  
Fresnel lens | Counterweight

CAP2100-W

#### TECHNICAL SPECIFICATIONS

Cut-off



✓ Wheel base  
Also available with rail base.

### CAP2300 ELECTRONIC PHOTODIODE

#### HEADLAMPS: HALOGEN, XENON

Laser alignment | Positioning assistance | Mirror  
1.8 m aluminum column  
Fresnel lens | Counterweight  
S2300 software  
Multilingual | LCD display  
Connection: RS232 communication port

CAP2300EX-WR

#### TECHNICAL SPECIFICATIONS

Angle measurement  
• Cut-off measurement : from +2% to -4%  
• Accuracy : +/- 0,2%  
Intensity measurement  
• Cut-off measurement : 0/125 kcd or 0/200 lux  
• Accuracy : 10%  
Lateral : yes / no



✓ Wheel base  
Also available with rail base.

### CAP2500 WIRELESS CONNECTED

#### HEADLAMPS: HALOGEN, XENON, LED

Laser alignment | Positioning assistance  
1.8 m aluminum column  
Fresnel lens | Counterweight  
S2300 software | Precise light sensor  
Multilingual | LCD display  
Connection: RS232 communication port, Bluetooth  
Battery and charger

#### TECHNICAL SPECIFICATIONS

Angle measurement  
• Cut-off measurement : from +2% to -4%  
• Accuracy : +/- 0,2%  
Intensity measurement  
• Cut-off measurement : 0/125 kcd or 0/200 lux  
• Accuracy : 10%  
Lateral : yes / no

	Wheel base	Rails base
Right drive	CAP2500EX-TDWB	CAP2500EX-TDRB
Left drive	CAP2500EX-TGWB	CAP2500EX-TGRB

✓ DUAL MODES : INSPECTION & WORKSHOPS





✓ Wheel base  
Also available with  
rail base.

## CAP2600 CAMERA

### HEADLAMPS: HALOGEN, XENON, LED, AFS

Camera CDD

Tilt compensation

Laser alignment | Positioning assistance

S2600 software | Data transmission

Multilingual | Color touch screen

Connections: RJ45, USB, Wifi

Long-life battery

Charger

	Wheel base	Rails base
Wired	CAP2600EX-W	CAP2600EX-S
Wireless	CAP2600EX-WW	CAP2600EX-SW

### TECHNICAL SPECIFICATIONS

Angle measurement

- Cut-off measurement : from +6% to -6%
- Accuracy : +/- 0,2%
- Side deviation : -10/+10 %
- Yaw angle : -90/+90°
- Roll angle : -90/+90°

Intensity measurement

- Cut-off measurement : 0/125 kcd or 0/200 lux
- Accuracy : 10%

AFS adjustment

✓ DUAL MODES : INSPECTION & WORKSHOPS



✓ Wheel base  
Also available with  
rail base.

## CAP2600 PRINTER

### HEADLAMPS: HALOGEN, XENON, LED, AFS

Camera CDD | Integrated thermal printer

Tilt compensation

Laser alignment | Positioning assistance

S2600 software

Multilingual | Color touch screen

Connections: RJ45, USB, Wifi

Long-life battery and charger

CAP2600AT-WIGA

### TECHNICAL SPECIFICATIONS

Angle measurement

- Cut-off measurement : from +6% to -6%
- Accuracy : +/- 0,2%
- Side deviation : -10/+10 %
- Yaw angle : -90/+90°
- Roll angle : -90/+90°

Intensity measurement

- Cut-off measurement : 0/125 kcd or 0/200 lux
- Accuracy : 10%

AFS adjustment

✓ DUAL MODES : INSPECTION & WORKSHOPS



✓ Rails 4,5 m

## CAP2900 AUTOMATED

### AUTOMATIC MEASUREMENT AND ALIGNMENT

CDD camera

Tilt compensation

S2900 software | Data transmission (ethernet)

Multilingual | Color touch screen | Linux

Connection: RJ45, USB, Wifi

1.7 m column | 5-position LED display

2 IR barriers for vehicle positioning

Wired power supply and communication (GIEGLAN)

Motion detection sensors

CAP2900EX-AF

### TECHNICAL SPECIFICATIONS

Angle measurement

- Cut-off measurement : from +6% to -6%
- Accuracy : +/- 0,2%
- Side deviation : -10/+10 %
- Yaw angle : -90/+90°
- Roll angle : -90/+90°

Intensity measurement

- Cut-off measurement : 0/125 kcd or 0/200 lux
- Accuracy : 10%

AFS adjustment

✓ DUAL MODES : INSPECTION & WORKSHOPS

## LIGHTING EXPERTISE

**WORKSHOP® range**  
For use in all areas  
of the garage



## Carry out a complete and accurate lighting safety diagnosis.

- Easy implementation
- ANYWHERE® multi-zone operation
- Pre-PTI inspection
- Detailed customer report

The CAP2600 Workshop® combines Capelec's PTI/MOT expertise with features adapted to the garage market.

### WORKSHOP® FEATURES

#### MULTI-ZONE



#### AFS



#### COMPLIANCE



#### REPORT



ANYWHERE® system to uneven ground irregularities, for precise use anywhere in the workshop.



Advanced AFS function: enables AFS headlights to be set, calibrated and configured.



Before/After Report: detailed report on the condition of the low beam.



- ✓ Wheel base
- ✓ ANYWHERE® module

### CAP2600 WORKSHOP®

#### HEADLAMPS: HALOGEN, XENON, LED, MATRIX

Integrated thermal printer  
Wireless communication  
Tilt compensation  
Laser alignment | Positioning assistance  
S2600 WS software

#### GARAGE EXPERTISE

Ground compensation system  
Self commissioning  
Pre-PTI inspection | Lighting diagnostics

CAP2600WS-WIGA

#### TECHNICAL SPECIFICATIONS

Angle measurement

- Cut-off measurement : from +6% to -6%
- Accuracy : +/- 0,2%
- Side deviation : -10/+10 %
- Yaw angle : -90/+90°
- Roll angle : -90/+90°

Intensity measurement

- Cut-off measurement : 0/125 kcd or 0/200 lux
- Accuracy : 10%

AFS adjustment

✓ GARAGE MODE

## COMMON OPTIONS (EXCEPT CAP2900)

### ERGONOMY



**Set of metallic LV rail**  
1,5m length | Galvanised steel

CAP2500-OPTRAIL1.5



**Set of metallic HGV rail**  
1,5m length | Galvanised steel

PRO03469



**Handle**  
Metal

PRO02209



**Brake set**  
Foot blocking

PRO02860



**Removable and adjustable mirror**  
Column brackets

PRO02938



**Protection cover**  
Black fabric

PRO02294

### PRINTERS



**Thermal printer | Wireless BT**  
Battery and charger

RS232 connection

CAP1000-IMPRS

Wireless connection

CAP1000-IMPBT

## CAP2600 OPTIONS

### ADD-ON



**Optional powerport and transmission**  
Coiled cable 5-8m long | RJ45 connection  
220V power supply

PRO03113



**Outdoor protection cover**  
Black fabric | Protective window  
Adjustable

PRO03177



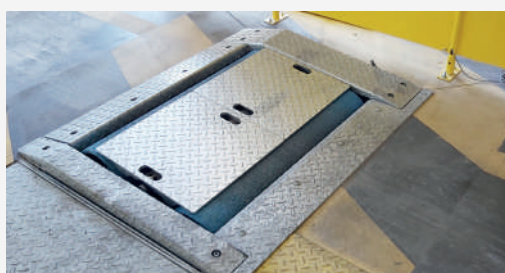
**Inclinometer module**  
Tilt compensation

SSE01009



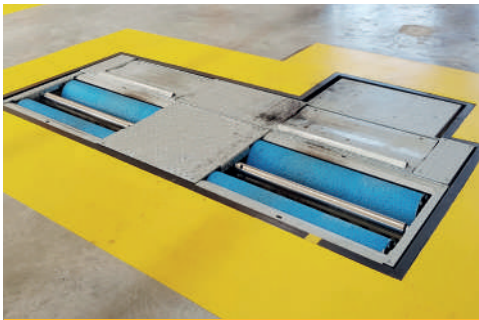
**Anywhere module**  
Pair | Laser pointer  
Bluetooth communication  
Ground compensation

SSE01169





## GROUND INSPECTION & WORKSHOP EQUIPMENT



LV | LV+ TEST LANE

39



HGV | MIXED TEST LANE

42



2, 3 AND 4 WHEELS  
BRAKE TESTERS

44



PLAY DETECTORS

50



DECELEROMETER

51

## MODULAR SOLUTIONS

- Universal and compact
  - All vehicle types
- Creation or replacement
  - Scalable equipment

## BRAKING | SUSPENSION | SIDE SLIP

**A complete range of equipment stand alone or combined.**

Capelec test benches can be integrated into all types of civil engineering, thanks to their compact dimensions and adaptable frames.

They can also be adapted to technical and regulatory developments via software and hardware updates, avoiding replacement costs.

## ADAPT YOUR EQUIPMENT

### FUNCTIONS

#### BRAKING



#### SUSPENSION



#### SIDE SLIP



### VEHICLES

#### LV LV+



#### HGV



#### 2 | 3 | 4 WHEELS



ALL BENCH COMBINATIONS PAGE 48-49



Available interfaces :

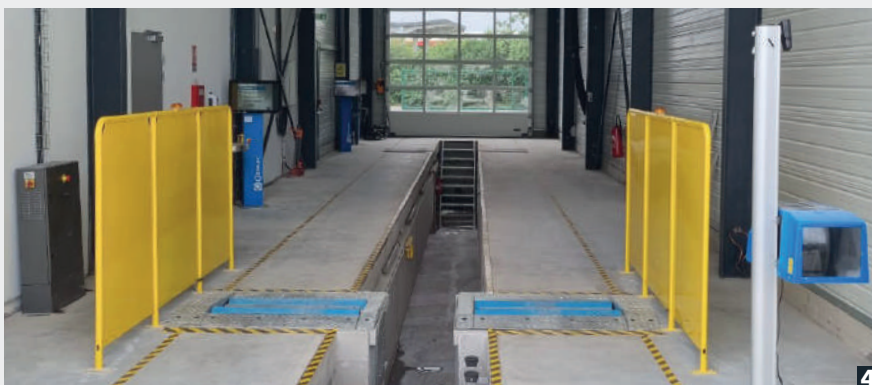
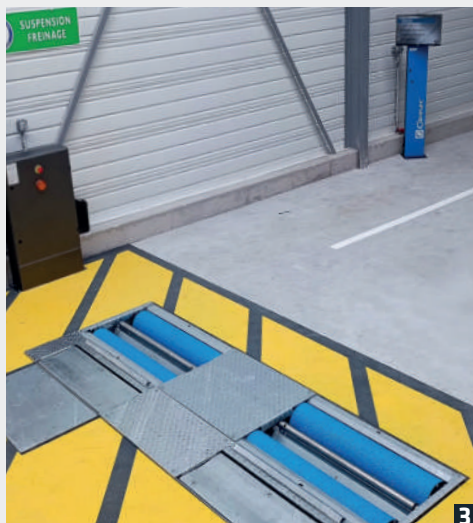
- ✓ PC interface on cabinet
- ✓ PC interface on Totem + cabinet

1 LV brake tester only

2 Mixed LV and HGV brake tester with pit

3 LV 3-function brake tester + touch-screen PC on Totem pole

4 HGV brake tester with pit + touch-screen PC on Totem pole (*optional safety kit*)

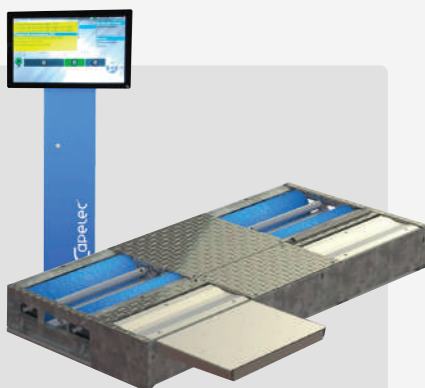


# MULTI-FUNCTION LV | LV+ TEST LANE

## BRAKING | SUSPENSION | SIDE SLIP

A device combining braking, suspension and slipping functions, and an interface.

### 3-FUNCTION UNIT



Modules :

- ✓ Brake tester
- ✓ Suspension tester
- ✓ Side slip tester
- ✓ Interface

**In case of replacement :**  
Use the appropriate adapter frame.  
See civil engineering options.

### 3-FUNCTION TEST LANE

#### BRAKING | SUSPENSION | SIDE SLIP

Soft starter  
Exit assistance  
4WD mode  
3-Function Software S9010

#### INTERFACE

PC | 23" touch screen  
HF remote control



#### PC interface on Totem pole

LV	CAP9010EX-MB
LV+	CAP9020EX-MB



#### PC interface without holder

LV	CAP9010EX-SMB
----	---------------

#### BRAKE TESTER SPECIFICATIONS

- Roller speed : 5km/h
- Maximum Axle load : 4t
- Maximum load per wheel : 2t
- Maximum force :  
CAP9010 3,7kW motor : 750 daN  
CAP9020 4kW motor : 900 daN
- Three phased power supply
- Path :  
LV : 80-220cm  
LV+ : 80-280cm

#### DIMENSIONS

- LV : 232 x 69 x 28cm
- LV+ : 292 x 69 x 28cm

#### SUSPENSION TESTER SPECIFICATIONS

- Maximum Axle load : 4t
- Maximum load per wheel : 2t
- Three phased power supply

#### DIMENSIONS

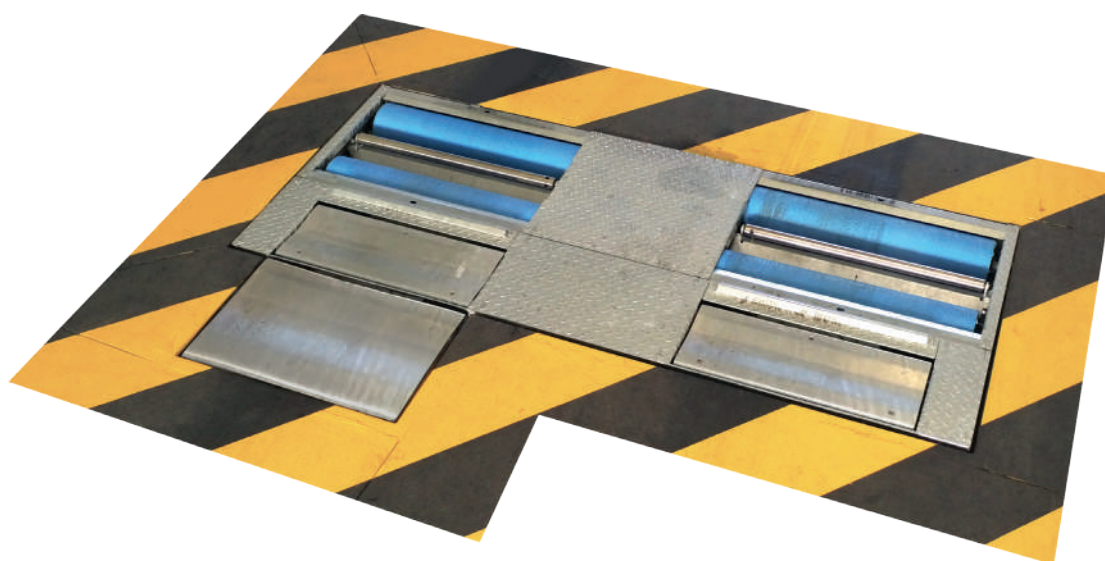
- LV : 232 x 43 x 28cm
- LV+ : 292 x 43 x 28cm

#### SIDE SLIP TESTER SPECIFICATIONS

- Maximum load per wheel : 2t
- Deflection : +/- 20m/km

#### DIMENSIONS

- LV : 73 x 52 x 7cm
- LV+ : 85 x 52 x 7cm



# LIGHT AND EXTRA LARGE VEHICLES TEST LANE

## EQUIPMENT SETTINGS

- 1 | Select module(s): braking, suspension, slipping
- 2 | Add an interface: type of holder and screen
- 3 | Select options

## 1 | MODULES



✓ Braking module  
Must be associated to an Interface.

In case of replacement :  
Use the appropriate adapter frame.  
See civil engineering options.

### BRAKE TESTER

#### Standard configuration :

Galvanised steel frame  
Aluminium rollers | Epoxy  
380V 3PH + N + EP power supply  
3,7kW motor

LV	CAP9010-BRA
LV+	CAP9020-BRA

#### SPECIFICATIONS

- Roller speed : 5km/h
- Maximum Axle load : 4t
- Maximum load per wheel : 2t
- Maximum force :  
CAP9010 3,7kW motor : 750 daN  
CAP9020 4kW motor : 900 daN
- Three phased power supply
- Path :  
LV : 80-220cm  
LARGE LV : 80-280cm

#### DIMENSIONS

- LV : 232 x 69 x 28cm
- LV+ : 292 x 69 x 28cm



✓ Suspension module  
Must be associated to an Interface.

### SUSPENSION TESTER

#### Standard configuration :

Galvanised steel frame  
380V 3PH + EP power supply  
3kW motor

LV	CAP9010-SUS
LV+	CAP9020-SUS

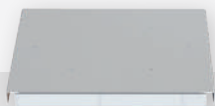
#### SPECIFICATIONS

- Maximum Axle load : 4t
- Maximum load per wheel : 2t
- Three phased power supply

#### DIMENSIONS

- LV : 232 x 43 x 28cm
- LV+ : 292 x 43 x 28cm

✓ Méthodes EUSAMA & Phase shift



✓ Slipping module  
Must be associated to an Interface.

### SIDE SLIP TESTER

#### Standard configuration :

Galvanised steel frame

LV	CAP9010-SIS
LV+	CAP9020-SIS

#### SPECIFICATIONS

- Maximum load per wheel : 2t
- Deflection : +/- 20m/km

#### DIMENSIONS

- LV : 73 x 52 x 7cm
- LV+ : 85 x 52 x 7cm



## 2 | INTERFACE



✓ Interface

## INTERFACE

## Standard configuration :

Compact control cabinet

23" screen | Software

Qwerty keyboard, touchpad, holder

INL

## DIMENSIONS

• 370 x 810 x 440 cm

## 3 | OPTIONS

## BRAKE TESTER ADD-ONS

	REF.
XS frame	<input type="checkbox"/> XSF
Winter tires rollers	<input type="checkbox"/> WTR
Soft starter	<input type="checkbox"/> SST
Exit assistance	<input type="checkbox"/> BLO
4WD mode	<input type="checkbox"/> FWD
Pedometer	<input type="checkbox"/> PED
Covering plates	<input type="checkbox"/> COV
Weighing sensor (if no suspension module)	<input type="checkbox"/> WEI
230V 3PH + EP power supply (4kW motor only)	<input type="checkbox"/> 230

## CIVIL ENGINEERING FRAME ADD-ONS (REPLACEMENT)

	REF.
MULLER civil engineering adapter (232 x 18 x 28cm)	<input type="checkbox"/> CV1
MAHA VTEQ civil engineering adapter (232 x 36 x 28cm)	<input type="checkbox"/> CV2

## SUSPENSION TESTER ADD-ONS

	REF.
230V 3PH + EP power supply (3kW motor only)	<input type="checkbox"/> 230

## INTERFACE ADD-ONS

	REF.
Totem	<input type="checkbox"/> TOT
23" touchscreen	<input type="checkbox"/> 23T
27" screen	<input type="checkbox"/> 27N
27" touchscreen	<input type="checkbox"/> 27T
Azerty keyboard, touchpad, holder	<input type="checkbox"/> AZR
IR remote control	<input type="checkbox"/> RIR
HF remote control	<input type="checkbox"/> RGF
Customised software	<input type="checkbox"/> NSO

# HEAVY GOODS VEHICLES AND MIXED TEST LANE

## EQUIPMENT SETTINGS

- 1 | Select module(s): braking, suspension, slipping
- 2 | Add an interface: screen and remote control
- 3 | Select options

### 1 | MODULES



✓ Braking module  
Must be associated to an Interface.

**In case of replacement :**  
Use the appropriate adapter frame.  
See civil engineering options.

#### BRAKE TESTER

##### Standard configuration :

Galvanised steel frame  
230V or 400V 3PH + N + EP power supply  
11kW motor  
Twin-chain transmission  
Steel rollers | Epoxy  
Soft starter

CAP9110-BRA

##### SPECIFICATIONS

- Roller speed : 2,5km/h
- Maximum load : 18t
- Maximum force : 40 000 daN
- Motor frequency : 50-60Hz
- Path : 800-2800mm

##### DIMENSIONS

- 1350 x 800 x 570mm (x2)



✓ Suspension module  
Must be associated to an Interface.

#### SUSPENSION TESTER

##### Standard configuration :

For Lv test lane  
Painted steel frame  
230V or 400V 3PH + EP power supply  
3kW motor

CAP9110-SUS

##### SPECIFICATIONS

- Axle in test weight (Max) : 3t
- Max. load per axle : 13t
- Three phased power supply
- Motor frequency : 50-60Hz

##### DIMENSIONS

- 870 x 850 x 330mm (x2)

✓ Méthode EUSAMA



✓ Slipping module  
Must be associated to an Interface.

#### SIDE SLIP TESTER

##### Standard configuration :

Painted steel frame

CAP9100EX-SS

##### SPECIFICATIONS

- Maximum load per wheel : 18t
- Deflection : +/- 20m/km

##### DIMENSIONS

- 1020 x 780 x 95mm

## 2 | INTERFACE



✓ Interface

## INTERFACE

## Standard configuration :

Totem and electrical cabinet

23" screen PC | Software

Qwerty keyboard, touchpad, holder

INH

## DIMENSIONS

- Height : 180 cm
- Floor area : 35 x 40 cm

## 3 | OPTIONS

## BRAKE TESTER ADD-ONS

	REF.
Exit assistance	<input type="checkbox"/> BLO
230V 3PH + EP power supply (11kW motor only)	<input type="checkbox"/> 230V
15kW motor (motor brake, 400V 3PH + EP power supply only)	<input type="checkbox"/> 15K
Covering plates	<input type="checkbox"/> COV
Dual speed (2,5km/h   5km/h)	<input type="checkbox"/> DSP
Pressure sensor	<input type="checkbox"/> PRS

## CIVIL ENGINEERING FRAME ADD-ONS (REPLACEMENT)

1 frame for civil engineering (without pit)	<input type="checkbox"/> 1FCV
2 frames for civil engineering (with pit)	<input type="checkbox"/> 2FCV
MAHA VTEQ civil engineering adapter	<input type="checkbox"/> CV1
MULLER civil engineering adapter	<input type="checkbox"/> CV2

## SECURITY OPTIONS

Side barrier	<input type="checkbox"/> SIB
Warning light for barrier	<input type="checkbox"/> WLB
Self-closing gate	<input type="checkbox"/> SCG
Safety set (required with options below)	<input type="checkbox"/> SEC
Optical barrier for pit	<input type="checkbox"/> OPB
Secure remote control with emergency stop	<input type="checkbox"/> SRC

## SUSPENSION TESTER ADD-ONS

230V 3PH + EP power supply (3kW motor only)	<input type="checkbox"/> 230
---	------------------------------

## INTERFACE ADD-ONS

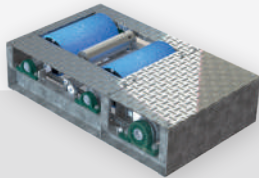
23" touchscreen	<input type="checkbox"/> 23T
27" screen	<input type="checkbox"/> 27N
27" touchscreen	<input type="checkbox"/> 27T
4 screens repeater	<input type="checkbox"/> 4SR
HF remote control	<input type="checkbox"/> RGF
Totem alone	<input type="checkbox"/> TOT
Azerty keyboard, touchpad, holder	<input type="checkbox"/> AZR
Customised software	<input type="checkbox"/> NSO

## 2, 3 AND 4 WHEELS BRAKE TESTERS

### EQUIPMENT SETTINGS

- 1 | Select a module : one or more wheels
- 2 | Add an interface: screen and remote control
- 3 | Select options

### 1 | MODULES



✓ Braking module  
Must be associated to an Interface.

#### MOTORBIKES BRAKE TESTER

##### Standard configuration :

Galvanised steel frame  
Aluminium rollers | Epoxy  
380V 3PH + N + EP power supply  
2,2kW motor  
Exit assistance  
Weighing sensor

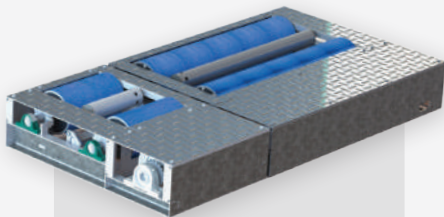
CAP9410-BRA

##### SPECIFICATIONS

- Roller speed : 5km/h
- Maximum load : 1t
- Maximum force : 300 daN

##### DIMENSIONS

- 102 x 62 x 26cm



✓ Braking module  
Must be associated to an Interface.

#### MOTORBIKES, TRICYCLES AND QUADS BRAKE TESTER

##### Standard configuration :

Galvanised steel frame  
Aluminium rollers | Epoxy  
Alimentation électrique 400V 3PH + N + EP  
2 x 2,2kW motor  
Exit assistance  
Weighing sensor

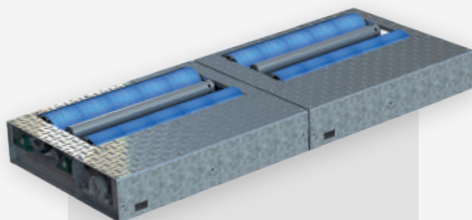
CAP9420-BRA

##### SPECIFICATIONS

- Roller speed : 5km/h
- Max. load per axle : 2t
- Maximum force : 300 daN per wheel

##### DIMENSIONS

- 2 wheels module : 102 x 62 x 26cm
- 3 wheels module : 102 x 126 x 26cm



✓ Braking module  
Must be associated to an Interface.

#### MOTORBIKES, TRICYCLES, QUADS AND LIGHT VEHICLES BRAKE TESTER

##### Standard configuration :

Galvanised steel frame  
Aluminium rollers | Epoxy  
400V 3PH + N + EP power supply  
2 x 2,2kW motor  
Exit assistance  
Weighing sensor

CAP9430-BRA

##### SPECIFICATIONS

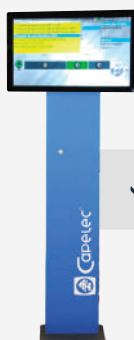
- Roller speed : 5km/h
- Max. load per axle : 2t
- Maximum force : 300 daN per wheel

##### DIMENSIONS

- 3 wheels module : 102 x 126 x 26cm (x2)



## 2 | INTERFACE



✓ Interface

## INTERFACE

## Standard configuration :

23" screen PC | Software

Qwerty keyboard, touchpad, holder

INM

## DIMENSIONS

• 370 x 810 x 440 cm

## 3 | OPTIONS

## BRAKE TESTER ADD-ONS

	REF.
3,7kW motor for light vehicles	<input type="checkbox"/> 03K
230V 3PH + EP power supply	<input type="checkbox"/> 230V
Pedometer	<input type="checkbox"/> PED
Manometer	<input type="checkbox"/> MANO
Clamp and command	<input type="checkbox"/> CC

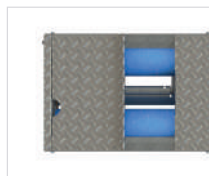
## SECURITY OPTIONS

Side barrier	<input type="checkbox"/> SIB
Warning light for barrier	<input type="checkbox"/> WLB
Optical emergency stop for rollers	<input type="checkbox"/> ORS

## INTERFACE ADD-ONS

23" touchscreen	<input type="checkbox"/> 23T
27" screen	<input type="checkbox"/> 27N
27" touchscreen	<input type="checkbox"/> 27T
Azerty keyboard, touchpad, holder	<input type="checkbox"/> AZR
HF remote control	<input type="checkbox"/> RGF
Customised software	<input type="checkbox"/> NSO

## LV LV+ OPTIONS



### Cover plates

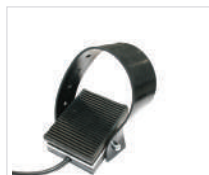
Two wheels technical inspection adaptor  
Steel

For CAP9010 LV series

PRO04069

For CAP9020 LV+ series

PRO04068



### Pedometer

Foot-pedal sensor  
Wireless BT connection  
CAP90x0 brake testers series

CAP9520



### Free rollers set

2 sets of 5 rollers  
Transport handle | Aluminium frame

CAP9000-RF



### HF remote control

USB | HF receiver  
Compatible with software for S9000 & S9600 series

CAP1000-RCHF-USB



### IR remote control

USB | infrared receiver  
Compatible with software for S9000 & S9600 series

CAP1000-RCIR-USB

## HGV OPTIONS



### Load simulator

CAP9110-SIM



### Pressure sensors

Hydraulic system pressure measurement  
Sensors and communication module

CAP01319



### Free rollers

2 sets of 3 rollers  
Maximum load : 16 t  
Protective cover

CAP9682



### Cover plate

Set of 4  
Steel

PRO04016



### PC keyboard support

PRO03029



### Repeater Totem

Column + 27" screen  
Height 1.80m

CAP91XX-OTRL

**Remote control with emergency stop**

Charging base  
Secure 433-434 MHz transmission  
64 channels

CAP91XX-SAU

**Column for repeater screen**

Column only  
Height 2.40m  
For 22"-27" screen

PRO04288

**Wall mount for screen**

Max. load 25kg

PRO04176

## INTERFACE OPTIONS

**Printer and storage cabinet**

A4 laser printer | USB port

SSE01220

**Storage cabinet**

A4 printer cabinet | 2 shelves  
Size 500 x 500 x 920

PRO04008

**Printer**

Inkjet printer | A4 size

PRO03790

**PC screen protective cover**

Polyester fabrics | Black

PRO02686

**Repeater screen**

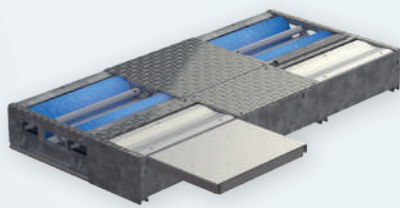
Extra 22" display screen

CAP00941

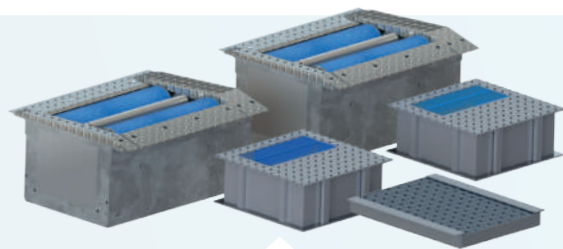
## TEST LANES COMBINATIONS

### SCALABLE EQUIPMENT

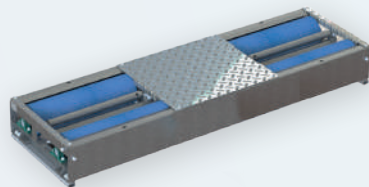
Test lanes can be combined to control a wide range of vehicles on the same line.



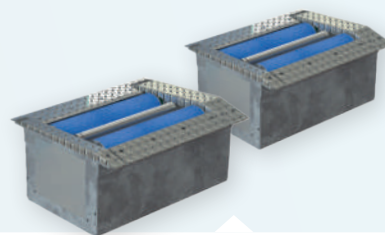
**CAP9010 - CAP9020**  
**BRAKE SUSPENSION SIDE SLIP TESTER**  
For light and extra large vehicles.



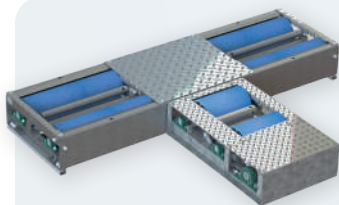
**CAP9110**  
**BRAKE SUSPENSION SIDE SLIP TESTER**  
For heavy goods vehicles.



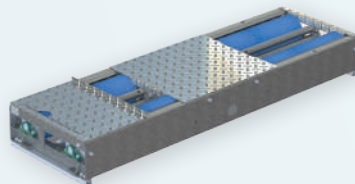
**CAP9010 - CAP9020**  
**BRAKE TESTER**  
For light and extra large vehicles.



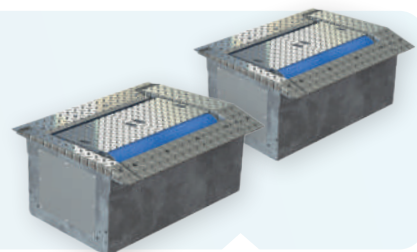
**CAP9110**  
**BRAKE TESTER**  
For heavy goods vehicles.



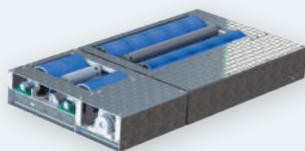
**CAPxxx**  
**BRAKE TESTER**  
For light vehicles,  
2 and 3 wheelers.



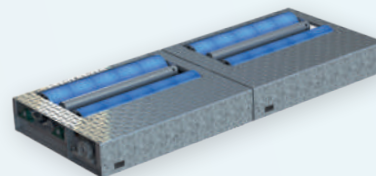
**CAPxxx**  
**BRAKE TESTER WITH PLATES**  
For light vehicles and 2 wheelers.



**CAPxxx**  
**BRAKE TESTER WITH PLATES**  
For heavy goods vehicles and 2  
wheelers.














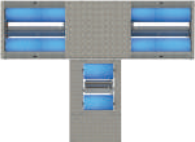






**CAP9420**  
**BRAKE TESTER**  
For motorcycles, tricycles  
and quads.



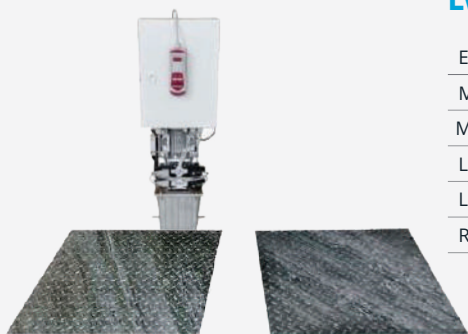
**CAP9430**  
**BRAKE TESTER**  
For motorcycles, tricycles, quads  
and light Vehicles.

VEHICLE CATEGORIES

	L1e	L2e	L3e	L4e	L5e	L6e	L7e	LV	HGV
									
 CAP010 CAP9020								✓	
 CAPxxx	✓		✓					✓	
 CAP9110									✓
 CAPxxx								✓	✓
 CAPxxx	✓	✓	✓	✓	✓	✓	✓	✓	
 CAP9410	✓		✓						
 CAP9xxx	✓	✓	✓	✓	✓				
 CAP9420	✓	✓	✓	✓	✓	✓	✓		
 CAP9430		✓		✓	✓	✓	✓	✓	



## LV PLAY DETECTORS



### LV PLAY DETECTOR

Electro-hydraulic operation

Maximum axle load/wheel load: 3 tons / 1,5 tons

Maximum working pressure: 175 bar

Longitudinal/transversal force: 8 kN

Longitudinal/transversal movement: 50 mm

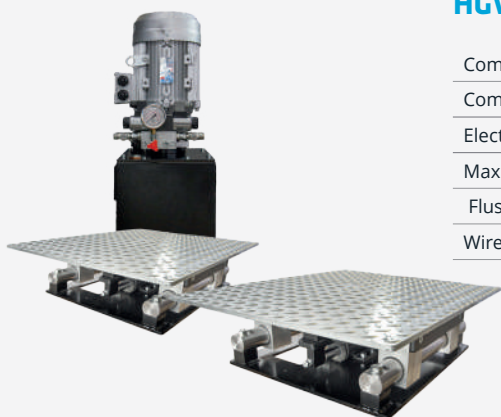
Remote control

Play detector (400V Tri)	CAP9200-LEH
Play detector (230V Tri)	CAP9201-LEH
Set of hoses	PRO03504
Frame	PRO02799

#### SPECIFICATIONS

- Movement speed: 60 mm/sec
- Cable length: 6,5 m
- Dimensions platform SM: 740 x 580 x 60 mm
- Dimensions platform FM: 690 x 700 x 60 mm
- Motor: 1,5 kW, 3PH+N+E 400V / 50Hz / 16A slow

## HGV PLAY DETECTORS



### HGV PLAY DETECTOR

Compatible with existing civil engineering

Compact frame or replacement adapter

Electro-hydraulic operation

Maximum load per wheel : 10 tons (passage)

Flush to the slab galvanized steel plates

Wireless remote control

Play detector (400V Tri)	CAP9210
Play detector (230V Tri)	CAP9211
Set of hoses	PRO04395
Creation frame	PRO04371
Adapter frame for MAHA	PROxxx
Adapter frame for Muller	PROxxx

#### SPECIFICATIONS

- Plate dimensions : 800 x 690 mm
- Frame dimensions : 212 x 550 x 600 mm
- Force per plate : 30 kN
- Movements : Longitudinal | Transversal | Diagonal
- Cylinder stroke : 100 mm
- Displacement speed : 70 mm/second
- Remote control: Wireless with LED light
- Motor : 4 kW, 3 phases +N +Earth 400v/50hz
- Coating : Hot dipped galvanized steel

# DECELEROMETER



## DECELEROMETER

Brake force tester

RS232 and wireless ports | LCD screen

PC report

S9500 software

### COMPLETE SET

- ✓ CAP9500 module
- ✓ Suction pad
- ✓ Protective storage case
- ✓ Cables
- ✓ PC report

Module alone	CAP9500EX-E
Complete set	CAP9500EX-B

### SPECIFICATIONS

- 3D sensor
- LCD screen
- S9500 software

## OPTIONS

### COMMUNICATION



**Thermal printer | Wireless BT**  
Battery and charger

RS232 connection

CAP1000-IMPRS

Wireless Bluetooth connection

CAP1000-IMPBT

### ERGONOMY



**Manometer**  
Hand pressure gauge

CAP9500A-CFM



**Pedometer**  
Foot-pedal pressure gauge

CAP9500A-CFP



**Bus door pressure**  
Bus door pressure gauge

CAP9500A-CFPA



**Universal crowbar**  
Motorbike  
Fitting for handlebars

SSE01044

# OTHER TESTERS



## PINCH DOOR FORCE TESTER

CAP9550 series

Measurement of doors and gates closing force

Precision measurements

Single operation button box | LCD display

Arm simulator | Carrying case

Bluetooth connexion | data transmission

Powered : sector and battery

CAP1000 portable printers (optional)

Calibration certificate

CAP9550



## TINT GLASS METER

CAP5600 series

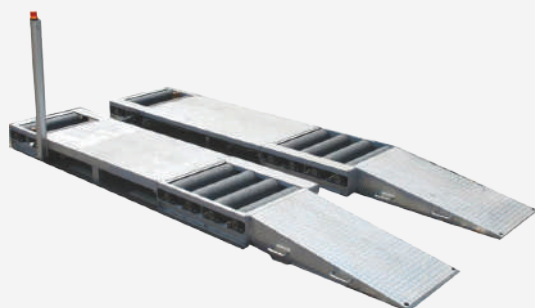
Measurement of the tint of the glass

Light transmittance and light reflectance tester

Long lasting battery | Suction pad

LCD display | Case

CAP5600



## TAXIMETER TEST BENCH

CAP9650 series

Inspection of taximeters

Light vehicle compatibility

Easy access rollers | S9650 software

12 rolls mechanism

Light operation indicator

Metallic frame | Tablet | Wireless controller

Compatible with ESP, ASR, VSA, VSC, ESC systems

CAP9650-CTL



## SONOMETER

Digital sound level meter

Display 3,2" | Class 2

USB connection | Bluetooth

Power supply or battery

Simultaneous measurement

Storage case

PRO04336

# General Terms Conditions of Sale

## Prices

- All prices are net in EUR. The prices applied are those published in the International Price List valid on the date of invoicing. Prices are exclusive of any applicable sales tax, value added tax or assimilated taxes, fees, import duties or other duties, insurance, transport and handling charges.

## Payment

- Payment terms shall be discussed between CAPELEC. and its customer at the moment of the offer writing. Invoices not paid within the due date shall thereafter bear overdue charges at the rate of 2% per month on the unpaid balance until paid in full. If in CAPELEC's opinion the purchaser's financial situation does not justify performance, production or shipment on the terms of payment specified, CAPELEC. may require full or partial payment in advance before shipment. CAPELEC may discontinue or delay continuance of performance or production if the purchaser fails to pay any moneys due. - If an unpaid amount is deemed uncollectable and transferred to a third party for the purpose of collection, any fees incurred are the responsibility of the purchaser and must be paid in full to CAPELEC or its assigned agent. - The amount of any present or future taxes applicable to the sale of products or services shall be added to the price and be paid by the purchaser unless the purchaser provides CAPELEC with a valid exemption certificate acceptable to CAPELEC and the appropriate tax authority.

## Title to Goods and Risk of Loss

- All prices are ex works (EXW Montpelier, France; ICC INCOTERM 2000) unless otherwise agreed in writing. Title and risk of loss for all products shall pass to the purchaser upon delivery by CAPELEC to a freight forwarder or purchaser's designate, regardless of shipping terms, method of payment or transport cost.

## Transit Damage Claims

- Ex works is our term of sale. Therefore, once the goods have been loaded for shipping, they become the responsibility of the purchaser. - It is the responsibility of the purchaser to receive the entire shipment as tendered

and file a claim with the carrier if the shipment or any part thereof is missing or damaged upon delivery. If there is any loss or damage at the time of delivery, it is essential to make the appropriate statement on the delivery receipt.

- Prompt inspection is of essence. Any concealed damage should be reported to the delivering carrier within 15 days of receipt of the shipment. Prompt filing of the claim with all necessary documents is required for fast settlement. All claims must be accompanied by the following documents:  
- Original paid freight bill - Certified copy of original bill of lading - Duplicate of invoice covering shipment - Duplicate of destination inspection report - Duplicate of delivery receipt noting shortage or damage.

## Acceptance

- Goods and services offered or quoted for are subject to availability. Orders are subject to acceptance by CAPELEC.

## Cancellation

- Modifications and add-ons to orders can only be accepted within the next working day after the original time of order placement. Thereafter add-ons will be considered as new orders. Orders cannot be cancelled by the purchaser except upon terms that will fully compensate CAPELEC against loss or by CAPELEC's prior written agreement.

## Returns

- Any products sold by CAPELEC may be returned only in accordance with the warranty provisions applicable to the product concerned. Before returning any product for whatever reason, the purchaser must obtain CAPELEC's prior written approval and instructions. Return and external fees are at the purchaser's expenses.

## Force Majeure

- CAPELEC shall not be liable for any loss, damage, delay, changes in shipment schedules or failure to deliver caused by accident, fire, earthquake, flood, meteorological exigency, animal or human disease, strike, lock-out, labour disputes, industrial action, riot, hooliganism, civil commotion, insurrection, revolution, terrorist acts, war whether declared or not, the elements, natural catastrophe, boycott, embargo, mutiny, failure of carriers, unavailability of transport facilities, exchange rates, fuel prices, power failures, government requirements

or prohibitions, import or export restrictions, law enforcement, computer virus, software failure, acts of God or public enemy, prior orders from customers or limitations of CAPELEC, its suppliers' or its subcontractors' production, marketing activities or services, or any other causes or contingencies beyond CAPELEC's control. CAPELEC shall in no event be liable for direct, indirect, ordinary or extraordinary, special, incidental damages or consequential loss including without limitation lost profits or loss of use or production or capital, whether based on contract, tort or any other legal theory.

## Liability

- CAPELEC shall in no event be liable for direct, indirect, ordinary or extraordinary, special, incidental damages or consequential loss including without limitation lost profits or loss of use or production or capital, whether based on contract, tort or any other legal theory. The remedies of the purchaser set forth herein are exclusive and the liability of CAPELEC with respect to any contract, or anything done in connection therewith such as the performance of breach hereof, or from the manufacture, sale, delivery, resale, installation or use of any products whether arising out to contract, negligence, strict tort, or under any warranty or otherwise, shall not exceed the purchase price of the products upon which liability is based.

## Severability

- Each portion and provision of the present terms is severable and if any provision is held invalid or unenforceable the remainder shall nevertheless remain valid and in full force and effect.

## Unique ecosystem identifier

The key identifier FR002721\_05KUZN attesting to the registration in EEE sector producers, in application of article L.541-10-13 of the Environment Code, has been attributed by ADEME to CAPELEC (381 622 976 00037). This identifier attests to its compliance with its obligation to record in the register of Electrical and Electronic Equipment producers and the completion of its marketing declarations to ecosystem.

## Jurisdiction

- All sales, agreements and contracts shall be governed by and construed in accordance with the laws of France.





