

QUANTOFIX® Cobalt

en

Pack content:

1 aluminum container with 100 test strips

Measuring range:

10–1000 mg/L Co^{2+}

Color gradation:

0 · 10 · 25 · 50 · 100 · 250 · 500 · 1000 mg/L Co^{2+}

General indications:

Remove only as many test strips as are required. Close the container immediately after removing a strip. Do not touch the test field.

Instructions for use:

1. Dip the test strip into the sample (pH 2–7) for 1 s.
2. Shake off excess liquid.
3. Wait 20 s.
4. Compare test field with the color scale.

The test field turns green-blue in presence of cobalt(II) ions.

Interferences:

If the reaction color does not appear on the color scale, larger quantities of foreign ions interfere.

Reaction color brown (copper (II)): the interference is eliminated by addition of a small amount of crystalline sodium thiosulfate to 5–10 mL of the test solution. Reaction color grey (mercury (I)): the interference is eliminated by addition of a small amount of crystalline sodium chloride to 5–10 mL of the test solution.

Highly acid solutions (pH < 2) must be buffered to a pH of 2–7 with crystalline sodium acetate. Concentrated cobalt (II) ions must be diluted so that the cobalt (II) content comes within the limits of the color scale. The dilution factor must be taken into account when calculating the cobalt (II) content.

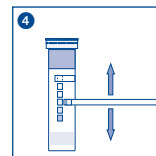
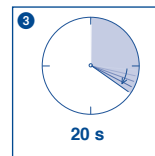
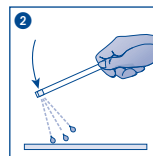
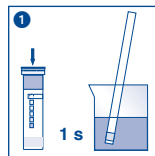
Disposal:










Used test strips can be placed in the normal household waste.

Storage:

Avoid exposing the strips to sunlight and moisture. Keep container cool and dry (storage temperature not above +30 °C).

If correctly stored, the test strips may be used until the use-by-date printed on the packaging.



 REF	Artikelnummer / Item number / Référence produit / Referencia / Artikelnummer / Numero di catalogo / Numer artykułu	 LOT	Chargenode / Batch identification / Número de lot / Código de lote / Productienummer / Codice del lotto / Numer partii
	Achtung / Warning! / Attention! / ¡Atención! / Let op! / Attenzione! / Uwaga!		Verwendbar bis / Use by / À utiliser avant / Fecha de caducidad / Te gebruiken tot / Utilizzare entro (anno / mese) / Przydatność do użycia
	Temperaturbegrenzung / Permitted storage temperature range / Limites de température / Limites de temperatura / Temperatuurbegrenzung / Limite de temperatura / Ograniczenie temperatury		Trocken aufbewahren / Store in a dry place / Conserver au sec / Mantener seco / Op een droge plaats bewaren / Mantenerse asciutto / Przechowywać w suchym miejscu
	Gebrauchsanweisung beachten / Please read instructions for use! / Respecter les instructions d'utilisation / Obsérvense las instrucciones de uso. / Lees de bijsluiter / Consultare le istru- zioni per l'uso / Przestrzegać instrukcję użycia		Packung geschlossen halten / Keep container closed / Refermer la boîte / Mantenga el envase cerrado / Verpak- king gesloten houden / Conservare la confezione chiusa / Przechowywać pojemnik szczelnie zamknięty
	Ausreichend für <n> Prüfungen / Contains sufficient for <n> tests / Contenu suffisant pour <n> tests / Contenido suficiente para <n> tests / Voldoende voor <n> tests / Contenuto sufficiente per <n> test / Wystarczająco dla kontroli <n>		