

LHC 75

The Leyro portable dry well temperature calibrator, for temperature calibrations, between 40 ... 375°C, offers a compact, economical and versatile solution for calibrating RTDs and thermocouples in industrial environments, offering excellent performance in stability and uniformity, as well as fast response time. The LHC 75 is easy to use, thanks to its compact and lightweight design. Thanks to the large size of the insert, it has a large drilling capacity and can calibrate a large number of thermocouples at the same time. Dry block diameter 27 mm and depth 120 mm.

Importør:
Impex Produkter AS
Gamle Drammensvei 107
1363 HØVIK
www.impex.no
info@impex.no
Tel.: 22 32 77 20



APPLICATIONS

On-site calibration
Maintenance and Service
All kind of Industry
Machinery Construction

HIGHLIGHTS

Fast , Compact and Light
High Calibration Capacity
Insert Ø 27 mm Length 120mm
Different types of inserts
Temperature Range: 40 °C...375 °C
Stability: $\pm 0,05^{\circ}\text{C}$
Warranty: 3 Years

General Information

Easy and intuitive temperature controller with 4 digits and a resolution of 0,1
Integrated PT 100 probe for reference temperature measurements
Accuracy: $\pm 0,3^{\circ}\text{C}$
Temperature Stability: $\pm 0,05^{\circ}\text{C}$
Uniformity : $\pm 0,2^{\circ}\text{C}$



Technical Data

Operating Temperature Range(°C)	40...375°C
Accuracy	± 0,3°C
Stability:	± 0,05°C
Resolution	± 0.1°C
Uniformity	± 0,2°C
Temperature Control	Internal PT100 (3 wires)
Calibration Volume	Ø 27mm x 120 mm
Heating Time	From 40 to 200 °C: 9 Minutes
Cooling Time	From 375 to 100 °C 35 Minutes
Housing and assembly	Portable
Dimensions	230 x 250 x 150 mm
Weight (kg)	6 kg.
Supply	100 ... 234 Vac 50/60 Hz
Power Consumption	Max 365 W
Standard insert	A 1 x Ø 3,1 / 2 x Ø 4,1/ 1 x Ø 6,1
Optional Inserts	B 1 x Ø 11,1 / 1 x Ø 6,5/ 1 x Ø 4,1/ 1 x Ø 3,1 C 1 x Ø 12,6 / 1 x Ø 6,5 D 1 x Ø 17,4 E Blank (without holes)

Scope of delivery

Basic Instrument LHC 75

Power Cord

Standard Insert: A 1 x Ø 3,1 / 2 x Ø 4,1/ 1 x Ø 6,1

Manufacturing Traceable Calibration Certificate 5 Points

Instruction Manual

3 Years Warranty against factory defects

Optional

Transport carry case (ABS material).

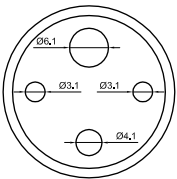
ISO 17025 Calibration Certificate (ENAC).

Optional Inserts: B 1 x Ø 11,1 / 1 x Ø 6,5/ 1 x Ø 4,1/ 1 x Ø 3,1

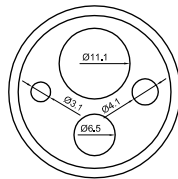
C 1 x Ø 12,6 / 1 x Ø 6,5

D 1 x Ø 17,4

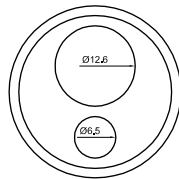
E Blank (without holes)



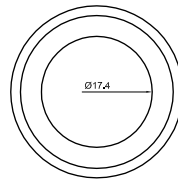
A



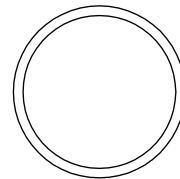
B



C



D



E