

visicolor® Powder Pillows

Phosphate

Reagent set for the photometric determination of phosphate content in water samples.

Measuring range:

0.03–4.5 mg/L PO₄ (16 mm OD)
 0.01–1.5 mg/L PO₄-P (16 mm OD)
 0.02–4.5 mg/L PO₄ (24 mm OD)
 0.01–1.5 mg/L PO₄-P (24 mm OD)

Method:

Photometric determination of the phosphate content as molybdenum blue.

Hazard warning:

Information regarding safety can be found on the box' label and in the safety data sheet. You can download the SDS from www.mn-net.com/SDS.

Procedure:

Requisite accessories: 2 test tubes 16 mm OD (REF 91680) or 2 test tubes 24 mm OD (REF 936101)

- 1 Rinse test tube several times with sample (*pH value of sample must be between pH 2 and 11*)

Blank (optional):

- 2 Fill one test tube with **10 mL** of sample
- 3 Clean test tube
- 4 Place test tube in photometer as blank value and adjust for zero

Sample:

- 5 Fill another test tube with **10 mL** of sample
- 6 Add content of **1 Powder Pillow Phosphate**
- 7 Close test tube **immediately** and **shake** for **30 s**
- 8 Wait for **2 min**
- 9 Clean test tube
- 10 Measure

Measurement:

See manual for all MACHEREY-NAGEL photometers.

The measurement against a reagent blank is recommended for most precise results. Fill a test tube with 10 mL distilled water and proceed as described under "Sample", then use this tube as blank value.

After use, rinse out test tubes thoroughly and seal them.

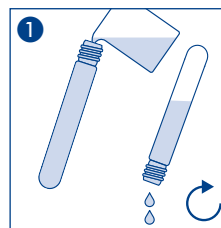
This method is suitable for the analysis of sea water.

Interferences:

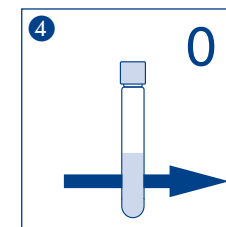
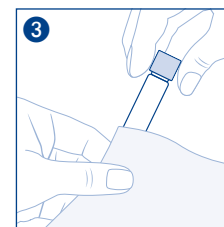
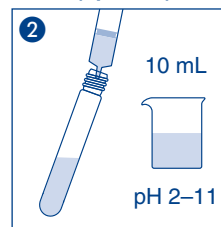
AsO₄³⁻; H₂S; > 5 mg/L Cu²⁺; 15 mg/L SiO₄²⁻; > 80 mg/L Cr³⁺, Zn²⁺; > 100 mg/L Fe³⁺; > 200 mg/L Al³⁺; > 300 mg/L Ni²⁺; Large amounts of oxidizing or reducing agents.

Disposal of samples:

Information regarding disposal can be found in the safety data sheet. You can download the SDS from www.mn-net.com/SDS.



Blank (optional):



Sample:

