



## Sauter GmbH

Ziegelei 1  
D-72336 Balingen  
E-Mail: [info@sauter.eu](mailto:info@sauter.eu)

Tel: +49-[0]7433- 9933-199  
Fax: +49-[0]7433-9933-149  
Internet: [www.sauter.eu](http://www.sauter.eu)

# Instruction Manual Manual Crank Handle Test Stand

## SAUTER TVL

Version 1.2  
06/2016  
GB

Importør:  
Impex Produkter AS  
Gamle Drammensvei 107  
1363 Høvik  
[www.impex.no](http://www.impex.no)  
[info@impex.no](mailto:info@impex.no)  
Tel.: 22 32 77 20



PROFESSIONAL MEASURING

TVL-BA-e-1612



# SAUTER TVL

Version 1.2 06/2016

## Instruction Manual

### Manual Crank Handle Test Stand

---

---

Thank you very much for buying this manual Crank Handle test stand of company SAUTER. We hope you are pleased with your high quality test stand with its big functional range. If you have any queries, wishes or helpful suggestions, do not hesitate to call our service number.

#### Summarize:

1	Scope of Delivery.....	3
2	Warning .....	3
3	Technical Specifications .....	3
4	Installation of the force gauge.....	4
5	Image with dimensions .....	5

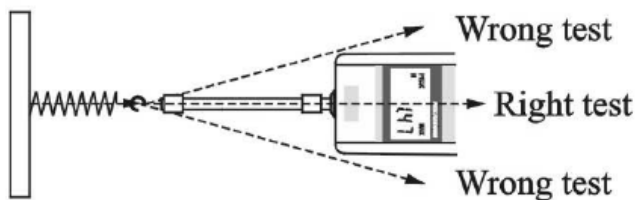
## 1 Scope of Delivery

- SAUTER TVL
- One hook

## 2 Warning

Incorrect performed force measurements can lead to serious injuries of persons and material damages. For this reason force measurements with this test stand may only be operated by trained and experienced staff.

Please avoid that forces are impacting from the test stand on the force gauge, which are exceeding the max. force of the measuring instrument or which do not impact directly from the test stand to the instrument.



## 3 Technical Specifications

**Max. admissible capacity: 500 Newton**

Measurement directions: vertically and horizontally:

Horizontal use of the test stand is enabled by allocating it onto the side.  
Height adjustment is possible by four plate screws M6.

Crank handle operation by a spindle lifting of 3,1mm per rotation

Fixation height of upper hook above base plate: 460 mm

Max. travel (height of spindle): 297 mm starting from base plate

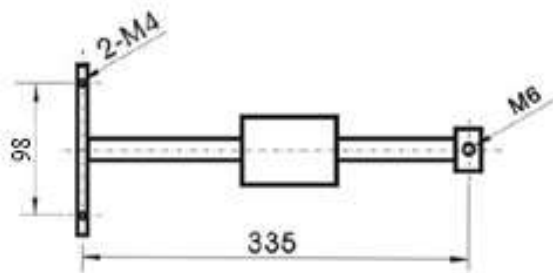
Height : 495 mm / Length : 235 mm / Depth: 150 mm

Proper weight: 8,6 kg

**Length measuring unit (without serial interface):** Scale length: 200 mm  
Reading precision: 0,01 mm

Switches:

- ON/O: switch on  
Zero position
- mm/In: switchover from millimeter to inch
  - ▲: Manual pre-selection of length, upward
  - ▼: manual pre-selection of length, downward



**Horizontal Install**

#### **4 Installation of the force gauge**

With four M 3 screws (included in delivery of the force gauges)

# 5 Image with dimensions

Dimensions (mm)

