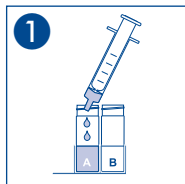


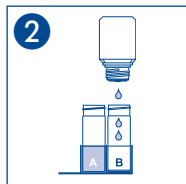
visocolor® ECO Chlor 2 (frei) Chlorine (free)/Chlore (libre)/Cloro (libre)

Messbereich / Range / Domaine de mesure / Rango
0.1–2.0 mg/L Cl₂

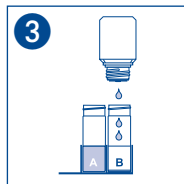
REF 931 015
931 215
931 016
931 216



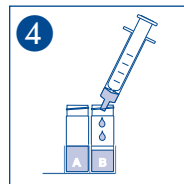
1 x 5 mL Probe
Sample
Echantillon
Muestra



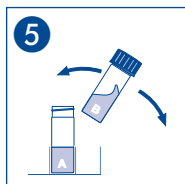
3 ∩ Cl₂-1



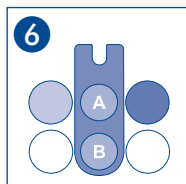
3 ∩ Cl₂-2



1 x 5 mL Probe
Sample
Echantillon
Muestra



Schütteln
Shake
Agiter
Agitar



Messung
Measurement
Mesure
Medición



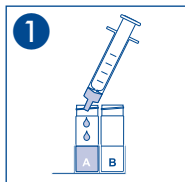
Meerwasser
Sea water
Eau de mer
Agua de mar

visocolor® ECO Chlor 2 (gesamt) Chlorine (total)/Chlore (totale)/Cloro (total)

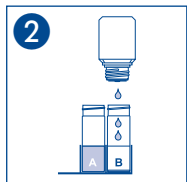


Messbereich / Range / Domaine de mesure / Rango
0.1–2.0 mg/L Cl₂

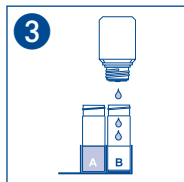
REF 931 015
931 215



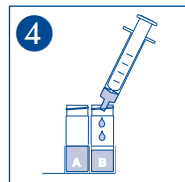
1 x 5 mL Probe
Sample
Echantillon
Muestra



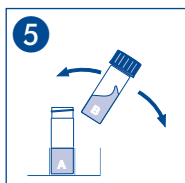
3 ⚭ Cl₂-1



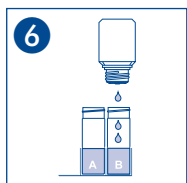
3 ⚭ Cl₂-2



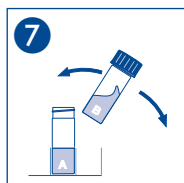
1 x 5 mL Probe
Sample
Echantillon
Muestra



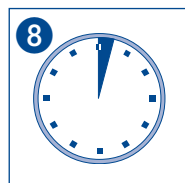
Schütteln
Shake
Agiter
Agitar



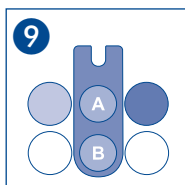
3 ⚭ Cl₂-3



Schütteln
Shake
Agiter
Agitar



2'00 min



Messung
Measurement
Mesure
Medición



Meerwasser
Sea water
Eau de mer
Agua de mar